



KLHL21 Monoclonal Antibody

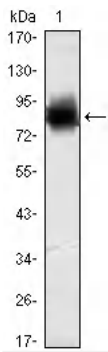
Catalog No	YP-Ab-12609
Isotype	IgG
Reactivity	Human
Applications	WB;IHC;IF;ELISA
Gene Name	KLHL21
Protein Name	Kelch-like protein 21
Immunogen	Purified recombinant fragment of human KLHL21 expressed in E. Coli.
Specificity	KLHL21 Monoclonal Antibody detects endogenous levels of KLHL21 protein.
Formulation	Ascitic fluid containing 0.03% sodium azide,0.5% BSA, 50%glycerol.
Source	Monoclonal, Mouse
Purification	Affinity purification
Dilution	WB: 1/500 - 1/2000. IHC: 1/200 - 1/1000. ELISA: 1/10000.. IF 1:50-200
Concentration	1 mg/ml
Purity	≥90%
Storage Stability	-20°C/1 year
Synonyms	KLHL21; KIAA0469; Kelch-like protein 21
Observed Band	
Cell Pathway	Cytoplasm, cytoskeleton, spindle . Localizes to the spindle midzone and targets CUL3 to this region.
Tissue Specificity	Brain,Hepatoma,Hippocampus,Lung carcinoma,PCR rescued clones,Spleen,
Function	function:Probable substrate-specific adapter of an E3 ubiquitin-protein ligase complex which mediates the ubiquitination and subsequent proteasomal degradation of target proteins.,pathway:Protein modification; protein ubiquitination.,similarity:Contains 1 BACK (BTB/Kelch associated) domain.,similarity:Contains 1 BTB (POZ) domain.,similarity:Contains 6 Kelch repeats.,subunit:Interacts with cul3.,
Background	function:Probable substrate-specific adapter of an E3 ubiquitin-protein ligase complex which mediates the ubiquitination and subsequent proteasomal degradation of target proteins.,pathway:Protein modification; protein ubiquitination.,similarity:Contains 1 BACK (BTB/Kelch associated) domain.,similarity:Contains 1 BTB (POZ) domain.,similarity:Contains 6 Kelch repeats.,subunit:Interacts with cul3.,
matters needing attention	Avoid repeated freezing and thawing!



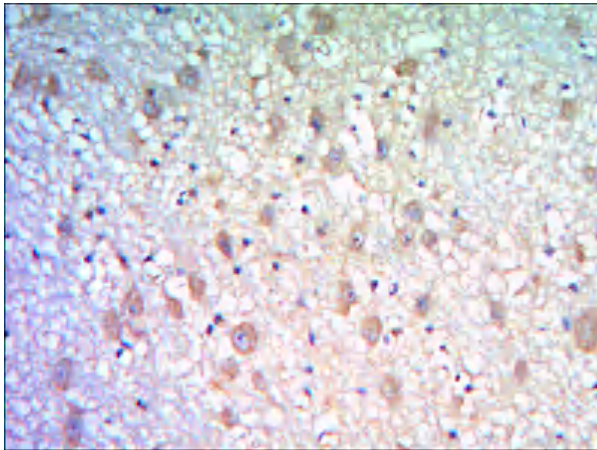
Usage suggestions

This product can be used in immunological reaction related experiments. For more information, please consult technical personnel.

Products Images



Western Blot analysis using KLHL21 Monoclonal Antibody against recombinant KLHL21 protein (1).



Immunohistochemistry analysis of paraffin-embedded human brain tissues with DAB staining using KLHL21 Monoclonal Antibody.