



GAP43 Polyclonal Antibody

| | |
|---------------------------|---|
| Catalog No | YP-Ab-12630 |
| Isotype | IgG |
| Reactivity | Human;Mouse;Rat |
| Applications | WB |
| Gene Name | GAP43 |
| Protein Name | Neuromodulin |
| Immunogen | Recombinant Protein of Neuromodulin |
| Specificity | The antibody detects endogenous GAP43 protein. |
| Formulation | PBS, pH 7.4, containing 0.5%BSA, 0.02% sodium azide as Preservative and 50% Glycerol. |
| Source | Polyclonal, Rabbit,IgG |
| Purification | The antibody was affinity-purified from rabbit antiserum by affinity-chromatography using specific immunogen. |
| Dilution | WB: 1:1000-3000 |
| Concentration | 1 mg/ml |
| Purity | ≥90% |
| Storage Stability | -20°C/1 year |
| Synonyms | GAP43; Neuromodulin; Axonal membrane protein GAP-43; Growth-associated protein 43; Neural phosphoprotein B-50; pp46 |
| Observed Band | 38,43kD |
| Cell Pathway | Cell membrane ; Peripheral membrane protein ; Cytoplasmic side . Cell projection, growth cone membrane ; Peripheral membrane protein ; Cytoplasmic side . Cell junction, synapse . Cell projection, filopodium membrane ; Peripheral membrane protein . Perikaryon . Cell projection, dendrite . Cell projection, axon . Cytoplasm . Cytoplasmic surface of growth cone and synaptic plasma membranes. . |
| Tissue Specificity | Alzheimer cortex,Brain,Subthalamic nucleus, |
| Function | function:This protein is associated with nerve growth. It is a major component of the motile "growth cones" that form the tips of elongating axons.,online information:Gap-43 entry,PTM:Phosphorylation of this protein by a protein kinase C is specifically correlated with certain forms of synaptic plasticity.,similarity:Belongs to the neuromodulin family.,similarity:Contains 1 IQ domain.,subcellular location:Cytoplasmic surface of growth cone and synaptic plasma membranes.,subunit:Binds calmodulin with a greater affinity in the absence of Ca(2+) than in its presence., |



Background

The protein encoded by this gene has been termed a 'growth' or 'plasticity' protein because it is expressed at high levels in neuronal growth cones during development and axonal regeneration. This protein is considered a crucial component of an effective regenerative response in the nervous system. Alternatively spliced transcript variants encoding distinct isoforms have been found for this gene. [provided by RefSeq, Jul 2008],

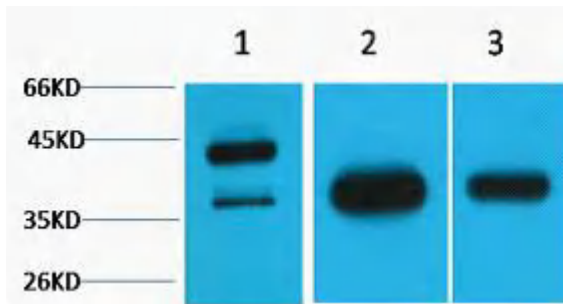
matters needing attention

Avoid repeated freezing and thawing!

Usage suggestions

This product can be used in immunological reaction related experiments. For more information, please consult technical personnel.

Products Images



Western blot analysis of 1) Hela, 2) Mouse Brain, 3) Rat Brain tissue, diluted at 1:3000. Secondary antibody(catalog#:RS0002) was diluted at 1:20000