



# EAAT2 Polyclonal Antibody

<b>Catalog No</b>	YP-Ab-12632
<b>Isotype</b>	IgG
<b>Reactivity</b>	Human;Rat;Mouse
<b>Applications</b>	WB
<b>Gene Name</b>	SLC1A2
<b>Protein Name</b>	Excitatory amino acid transporter 2 (Glutamate/aspartate transporter II) (Sodium-dependent glutamate/aspartate transporter 2) (Solute carrier family 1 member 2)
<b>Immunogen</b>	Synthetic Peptide of EAAT2 AA range: 370-420
<b>Specificity</b>	EAAT2 protein(A223) detects endogenous levels of EAAT2
<b>Formulation</b>	Liquid in PBS containing 50% glycerol, 0.5% BSA and 0.02% sodium azide.
<b>Source</b>	Polyclonal, Rabbit,IgG
<b>Purification</b>	The antibody was affinity-purified from rabbit antiserum by affinity-chromatography using specific immunogen.
<b>Dilution</b>	WB 1:1000-2000
<b>Concentration</b>	1 mg/ml
<b>Purity</b>	≥90%
<b>Storage Stability</b>	-20°C/1 year
<b>Synonyms</b>	Excitatory amino acid transporter 2 (Glutamate/aspartate transporter II) (Sodium-dependent glutamate/aspartate transporter 2) (Solute carrier family 1 member 2)
<b>Observed Band</b>	62kD
<b>Cell Pathway</b>	Cell membrane ; Multi-pass membrane protein .
<b>Tissue Specificity</b>	Brain,Brain cortex,Pancreas,
<b>Function</b>	function:Transports L-glutamate and also L- and D-aspartate. Essential for terminating the postsynaptic action of glutamate by rapidly removing released glutamate from the synaptic cleft. Acts as a symport by cotransporting sodium.,PTM:Glycosylated.,similarity:Belongs to the sodium:dicarboxylate (SDF) symporter (TC 2.A.23) family.,subunit:Homotrimer. Interacts with JUB.,
<b>Background</b>	This gene encodes a member of a family of solute transporter proteins. The membrane-bound protein is the principal transporter that clears the excitatory neurotransmitter glutamate from the extracellular space at synapses in the central nervous system. Glutamate clearance is necessary for proper synaptic activation and to prevent neuronal damage from excessive activation of glutamate receptors. Mutations in and decreased expression of this protein are associated with amyotrophic lateral sclerosis. Alternatively spliced transcript variants of this



gene have been identified. [provided by RefSeq, Sep 2010],

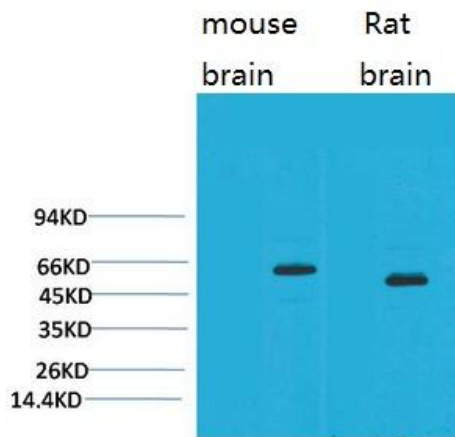
**matters needing attention**

Avoid repeated freezing and thawing!

**Usage suggestions**

This product can be used in immunological reaction related experiments. For more information, please consult technical personnel.

**Products Images**



Western blot analysis of 1) Mouse Brain Tissue, 2)Rat Brain Tissue with EAAT2 Rabbit pAb diluted at 1:2,000.