



KOR-1 (phospho Ser369) Polyclonal Antibody

Catalog No	YP-Ab-12638
Isotype	IgG
Reactivity	Mouse;Rat
Applications	WB;IHC;IF;ELISA
Gene Name	OPRK1
Protein Name	Kappa-type opioid receptor
Immunogen	The antiserum was produced against synthesized peptide derived from mouse KOR-1 around the phosphorylation site of Ser369. AA range:331-380
Specificity	Phospho-KOR-1 (S369) Polyclonal Antibody detects endogenous levels of KOR-1 protein only when phosphorylated at S369.
Formulation	Liquid in PBS containing 50% glycerol, 0.5% BSA and 0.02% sodium azide.
Source	Polyclonal, Rabbit,IgG
Purification	The antibody was affinity-purified from rabbit antiserum by affinity-chromatography using epitope-specific immunogen.
Dilution	WB: 1/500 - 1/2000. IHC: 1/100 - 1/300. ELISA: 1/10000.. IF 1:50-200
Concentration	1 mg/ml
Purity	≥90%
Storage Stability	-20°C/1 year
Synonyms	OPRK1; OPRK; Kappa-type opioid receptor; K-OR-1; KOR-1
Observed Band	42kD
Cell Pathway	
Tissue Specificity	
Function	
Background	Endogenous opioid peptides and opiates, like morphine, transmit their pharmacological effects through membrane bound opioid receptors. Pharmacological studies and molecular cloning have led to the identification of three different types of opioid receptor, mu-type, delta-type and kappa-type, also designated MOR-1, DOR-1 and KOR-1, respectively. MOR-1 is a receptor for beta-endorphin, DOR-1 is a receptor for enkephalins, and KOR-1 is a receptor for dynorphins. The three opioid receptor types are highly homologous and belong to the superfamily of G-protein-coupled receptors. Opioid receptors have been shown to modulate a range of brain functions, including instinctive behavior and emotions. This regulation is thought to involve the inhibition of neurotransmitter release by reducing calcium ion currents and increasing potassium ion conductance.



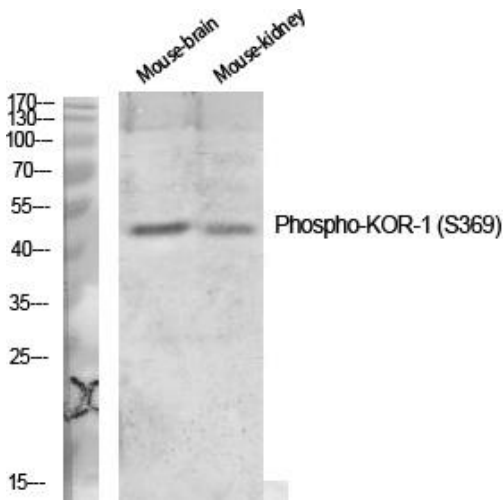
matters needing attention

Avoid repeated freezing and thawing!

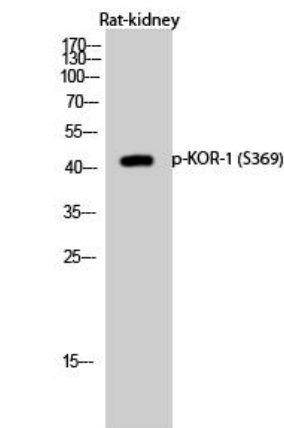
Usage suggestions

This product can be used in immunological reaction related experiments. For more information, please consult technical personnel.

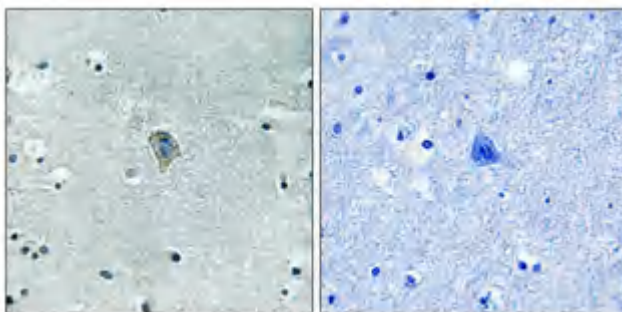
Products Images



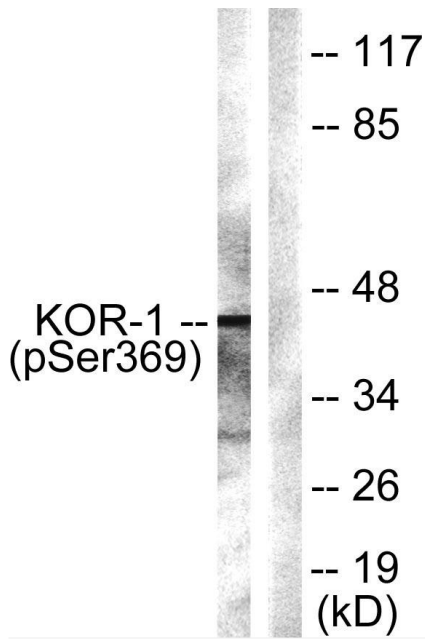
Western Blot analysis of various cells using Phospho-KOR-1 (S369) Polyclonal Antibody diluted at 1:1000



Western Blot analysis of Rat-kidney cells using Phospho-KOR-1 (S369) Polyclonal Antibody diluted at 1:1000



Immunohistochemical analysis of paraffin-embedded Human brain. Antibody was diluted at 1:100(4° overnight). High-pressure and temperature Tris-EDTA,pH8.0 was used for antigen retrieval. Negative contrl (right) obtaned from antibody was pre-absorbed by immunogen peptide.



Western blot analysis of lysates from NIH/3T3 cells, using KOR-1 (Phospho-Ser369) Antibody. The lane on the right is blocked with the phospho peptide.