



# DARPP-32 (phospho Thr34) Polyclonal Antibody

<b>Catalog No</b>	YP-Ab-12654
<b>Isotype</b>	IgG
<b>Reactivity</b>	Human;Mouse;Rat
<b>Applications</b>	WB;IHC;IF;ELISA
<b>Gene Name</b>	PPP1R1B
<b>Protein Name</b>	Protein phosphatase 1 regulatory subunit 1B
<b>Immunogen</b>	The antiserum was produced against synthesized peptide derived from human DARPP-32 around the phosphorylation site of Thr34. AA range:18-67
<b>Specificity</b>	Phospho-DARPP-32 (T34) Polyclonal Antibody detects endogenous levels of DARPP-32 protein only when phosphorylated at T34.
<b>Formulation</b>	Liquid in PBS containing 50% glycerol, 0.5% BSA and 0.02% sodium azide.
<b>Source</b>	Polyclonal, Rabbit,IgG
<b>Purification</b>	The antibody was affinity-purified from rabbit antiserum by affinity-chromatography using epitope-specific immunogen.
<b>Dilution</b>	Western Blot: 1/500 - 1/2000. Immunohistochemistry: 1/100 - 1/300. Immunofluorescence: 1/200 - 1/1000. ELISA: 1/10000. Not yet tested in other applications.
<b>Concentration</b>	1 mg/ml
<b>Purity</b>	≥90%
<b>Storage Stability</b>	-20°C/1 year
<b>Synonyms</b>	PPP1R1B; DARPP32; Protein phosphatase 1 regulatory subunit 1B; DARPP-32; Dopamine- and cAMP-regulated neuronal phosphoprotein
<b>Observed Band</b>	35kD
<b>Cell Pathway</b>	Cytoplasm.
<b>Tissue Specificity</b>	Adipose tissue,Brain,Cerebellum,Colon,Ovary,
<b>Function</b>	function:Inhibitor of protein-phosphatase 1.,PTM:Dopamine- and cyclic AMP-regulated neuronal phosphoprotein.,PTM:Phosphorylation of Thr-34 is required for activity.,similarity:Belongs to the protein phosphatase inhibitor 1 family.,
<b>Background</b>	This gene encodes a bifunctional signal transduction molecule. Dopaminergic and glutamatergic receptor stimulation regulates its phosphorylation and function as a kinase or phosphatase inhibitor. As a target for dopamine, this gene may serve as a therapeutic target for neurologic and psychiatric disorders. Multiple transcript variants encoding different isoforms have been found for this gene. [provided by RefSeq, Oct 2011],



**matters needing attention**

Avoid repeated freezing and thawing!

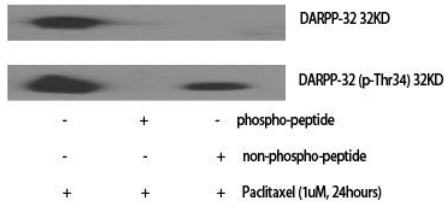
**Usage suggestions**

This product can be used in immunological reaction related experiments. For more information, please consult technical personnel.

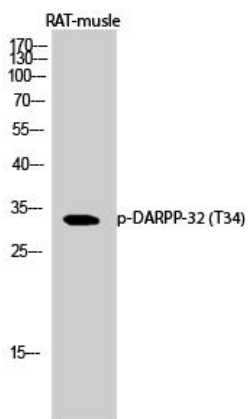


## Products Images

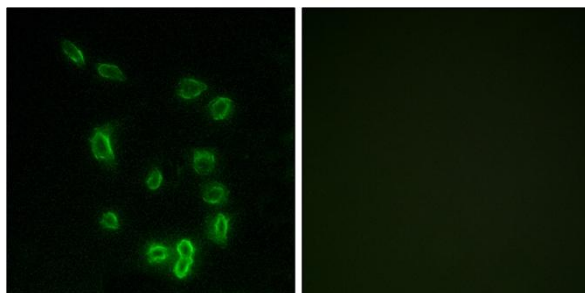
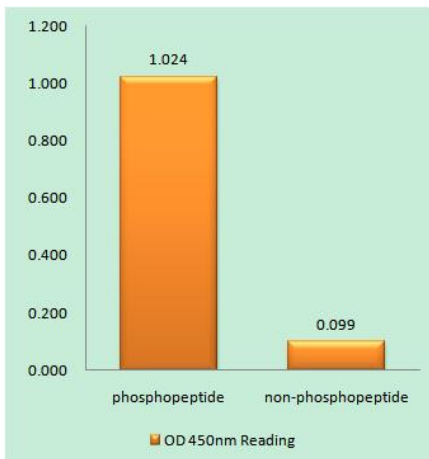
Western Blot analysis of various cells using Phospho-DARPP-32 (T34) Polyclonal Antibody diluted at 1:1000



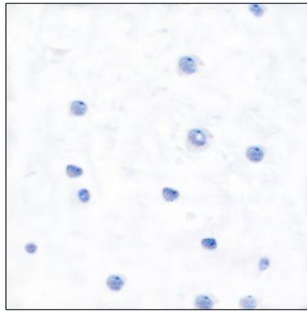
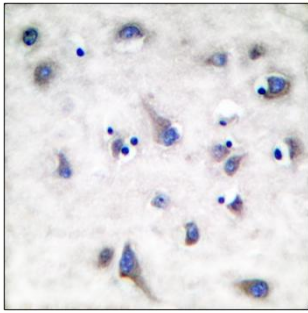
Western Blot analysis of RAT-muscle cells using Phospho-DARPP-32 (T34) Polyclonal Antibody diluted at 1:1000



Enzyme-Linked Immunosorbent Assay (Phospho-ELISA) for Immunogen Phosphopeptide (Phospho-left) and Non-Phosphopeptide (Phospho-right), using DARPP-32 (Phospho-Thr34) Antibody



Immunofluorescence analysis of HepG2 cells, using DARPP-32 (Phospho-Thr34) Antibody. The picture on the right is blocked with the phospho peptide.



Immunohistochemistry analysis of paraffin-embedded human brain, using DARPP-32 (Phospho-Thr34) Antibody. The picture on the right is blocked with the phospho peptide.



# DARPP-32 (pThr34)