



# ALS2CR13 Polyclonal Antibody

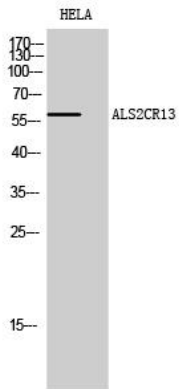
|                                  |  |
|----------------------------------|--|
| <b>Catalog No</b>                | YP-Ab-12680  |
| <b>Isotype</b>                   | IgG  |
| <b>Reactivity</b>                | Human;Mouse  |
| <b>Applications</b>              | WB;ELISA   |
| <b>Gene Name</b>                 | FAM117B  |
| <b>Protein Name</b>              | Protein FAM117B  |
| <b>Immunogen</b>                 | The antiserum was produced against synthesized peptide derived from human ALS2CR13. AA range:411-460   |
| <b>Specificity</b>               | ALS2CR13 Polyclonal Antibody detects endogenous levels of ALS2CR13 protein.  |
| <b>Formulation</b>               | Liquid in PBS containing 50% glycerol, 0.5% BSA and 0.02% sodium azide.  |
| <b>Source</b>                    | Polyclonal, Rabbit,IgG   |
| <b>Purification</b>              | The antibody was affinity-purified from rabbit antiserum by affinity-chromatography using epitope-specific immunogen.  |
| <b>Dilution</b>                  | Western Blot: 1/500 - 1/2000. ELISA: 1/5000. Not yet tested in other applications.   |
| <b>Concentration</b>             | 1 mg/ml  |
| <b>Purity</b>                    | ≥90%   |
| <b>Storage Stability</b>         | -20°C/1 year   |
| <b>Synonyms</b>                  | FAM117B; ALS2CR13; Protein FAM117B; Amyotrophic lateral sclerosis 2 chromosomal region candidate gene 13 protein   |
| <b>Observed Band</b>             | 60kD   |
| <b>Cell Pathway</b>              | cytoplasm,   |
| <b>Tissue Specificity</b>        | Human salivary gland,Kidney,Skin,  |
| <b>Function</b>                  | miscellaneous:ALS2CR13 is mapped in the genomic region covering the complete candidate region for Amyotrophic lateral sclerosis 2 (ALS2).,sequence caution:Contaminating sequence. Sequence of unknown origin in the N-terminal part., |
| <b>Background</b>                | miscellaneous:ALS2CR13 is mapped in the genomic region covering the complete candidate region for Amyotrophic lateral sclerosis 2 (ALS2).,sequence caution:Contaminating sequence. Sequence of unknown origin in the N-terminal part., |
| <b>matters needing attention</b> | Avoid repeated freezing and thawing!   |



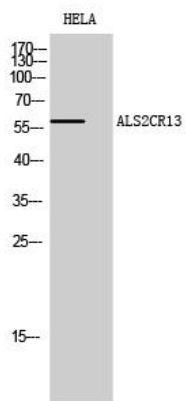
### Usage suggestions

This product can be used in immunological reaction related experiments. For more information, please consult technical personnel.

## Products Images



Western Blot analysis of HELA cells using ALS2CR13 Polyclonal Antibody diluted at 1:500



Western Blot analysis of HELA cells using ALS2CR13 Polyclonal Antibody diluted at 1:500