



# Cerebellin 4 Polyclonal Antibody

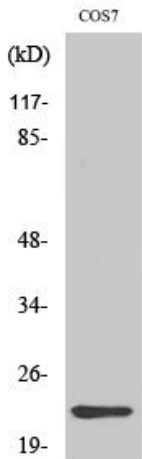
<b>Catalog No</b>	YP-Ab-12701
<b>Isotype</b>	IgG
<b>Reactivity</b>	Human;Mouse;Monkey
<b>Applications</b>	WB;IHC;IF;ELISA
<b>Gene Name</b>	CBLN4
<b>Protein Name</b>	Cerebellin-4
<b>Immunogen</b>	The antiserum was produced against synthesized peptide derived from human CBLN4. AA range:141-190
<b>Specificity</b>	Cerebellin 4 Polyclonal Antibody detects endogenous levels of Cerebellin 4 protein.
<b>Formulation</b>	Liquid in PBS containing 50% glycerol, 0.5% BSA and 0.02% sodium azide.
<b>Source</b>	Polyclonal, Rabbit,IgG
<b>Purification</b>	The antibody was affinity-purified from rabbit antiserum by affinity-chromatography using epitope-specific immunogen.
<b>Dilution</b>	WB: 1/500 - 1/2000. IHC: 1/100 - 1/300. ELISA: 1/40000.. IF 1:50-200
<b>Concentration</b>	1 mg/ml
<b>Purity</b>	≥90%
<b>Storage Stability</b>	-20°C/1 year
<b>Synonyms</b>	CBLN4; CBLNL1; Cerebellin-4; Cerebellin-like glycoprotein 1
<b>Observed Band</b>	27kD
<b>Cell Pathway</b>	Secreted . Cell junction, synapse . Detected at GABAergic synapses. .
<b>Tissue Specificity</b>	Brain,
<b>Function</b>	function:May be involved in synaptic functions in the CNS. Can enable ER export and secretion of CBLN3.,similarity:Contains 1 C1q domain.,subunit:Homohexamer; disulfide-linked homotrimers. The trimers are assembled via the globular C1q domains. The trimers associate via N-terminal cysteine residues to form disulfide-linked hexamers. May interact with CBLN1, CBLN2 and CBLN3.,
<b>Background</b>	This gene encodes a member of a family of small secreted proteins containing C1Q domains. Members of this family are involved in regulation of neurexin signalling during synapse development. The mouse homolog of the protein encoded by this gene competes with netrin to bind to the deleted in colorectal cancer receptor. [provided by RefSeq, Aug 2012],
<b>matters needing attention</b>	Avoid repeated freezing and thawing!



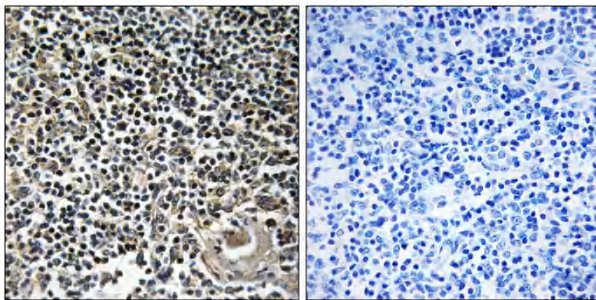
**Usage suggestions**

This product can be used in immunological reaction related experiments. For more information, please consult technical personnel.

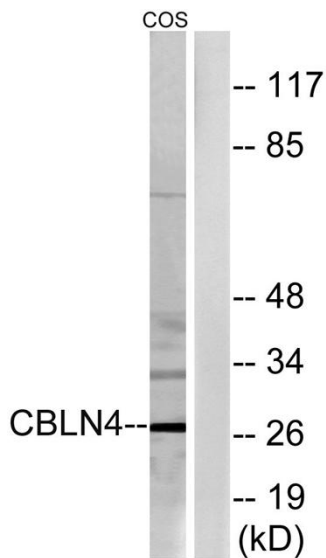
**Products Images**



Western Blot analysis of various cells using Cerebellin 4 Polyclonal Antibody



Immunohistochemistry analysis of paraffin-embedded human thymus gland tissue, using CBLN4 Antibody. The picture on the right is blocked with the synthesized peptide.



Western blot analysis of lysates from COS cells, using CBLN4 Antibody. The lane on the right is blocked with the synthesized peptide.