



DCAMKL3 Polyclonal Antibody

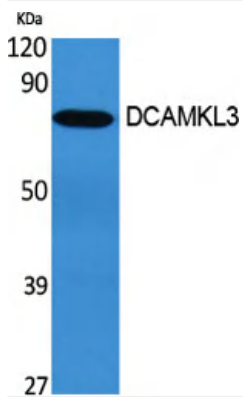
| | |
|----------------------------------|--|
| Catalog No | YP-Ab-12713 |
| Isotype | IgG |
| Reactivity | Human;Rat;Mouse; |
| Applications | WB;IHC;IF;ELISA |
| Gene Name | DCLK3 |
| Protein Name | Serine/threonine-protein kinase DCLK3 |
| Immunogen | The antiserum was produced against synthesized peptide derived from human DCLK3. AA range:291-340 |
| Specificity | DCAMKL3 Polyclonal Antibody detects endogenous levels of DCAMKL3 protein. |
| Formulation | Liquid in PBS containing 50% glycerol, 0.5% BSA and 0.02% sodium azide. |
| Source | Polyclonal, Rabbit,IgG |
| Purification | The antibody was affinity-purified from rabbit antiserum by affinity-chromatography using epitope-specific immunogen. |
| Dilution | WB: 1/500 - 1/2000. IHC: 1/100 - 1/300. ELISA: 1/5000.. IF 1:50-200 |
| Concentration | 1 mg/ml |
| Purity | ≥90% |
| Storage Stability | -20°C/1 year |
| Synonyms | DCLK3; DCAMKL3; DCDC3C; KIAA1765; Serine/threonine-protein kinase DCLK3; Doublecortin domain-containing protein 3C; Doublecortin-like and CAM kinase-like 3; Doublecortin-like kinase 3 |
| Observed Band | 73kD |
| Cell Pathway | Cytoplasm . Nucleus . |
| Tissue Specificity | Brain, |
| Function | catalytic activity:ATP + a protein = ADP + a phosphoprotein.,similarity:Belongs to the protein kinase superfamily.,similarity:Belongs to the protein kinase superfamily. CAMK Ser/Thr protein kinase family. CaMK subfamily.,similarity:Contains 1 protein kinase domain., |
| Background | catalytic activity:ATP + a protein = ADP + a phosphoprotein.,similarity:Belongs to the protein kinase superfamily.,similarity:Belongs to the protein kinase superfamily. CAMK Ser/Thr protein kinase family. CaMK subfamily.,similarity:Contains 1 protein kinase domain., |
| matters needing attention | Avoid repeated freezing and thawing! |



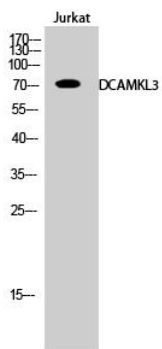
Usage suggestions

This product can be used in immunological reaction related experiments. For more information, please consult technical personnel.

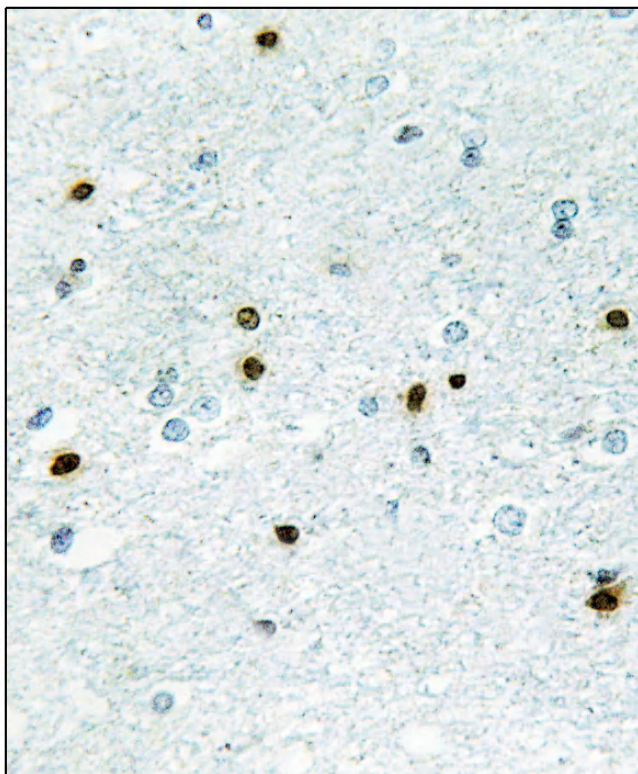
Products Images



Western Blot analysis of various cells using DCAMKL3 Polyclonal Antibody



Western Blot analysis of Jurkat cells using DCAMKL3 Polyclonal Antibody



Immunohistochemistry analysis of paraffin-embedded human brain, using DCAMKL3 Antibody. The picture on the right is blocked with the synthesized peptide.

