

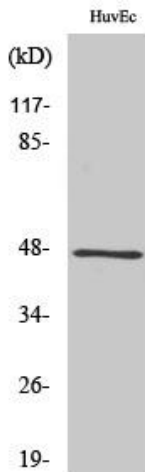


GRIN2 Polyclonal Antibody

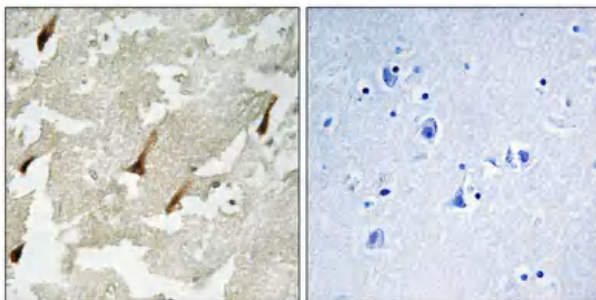
Catalog No	YP-Ab-12734
Isotype	IgG
Reactivity	Human;Rat;Mouse;
Applications	WB;IHC;IF;ELISA
Gene Name	GPRIN2
Protein Name	G protein-regulated inducer of neurite outgrowth 2
Immunogen	The antiserum was produced against synthesized peptide derived from human GPRIN2. AA range:11-60
Specificity	GRIN2 Polyclonal Antibody detects endogenous levels of GRIN2 protein.
Formulation	Liquid in PBS containing 50% glycerol, 0.5% BSA and 0.02% sodium azide.
Source	Polyclonal, Rabbit,IgG
Purification	The antibody was affinity-purified from rabbit antiserum by affinity-chromatography using epitope-specific immunogen.
Dilution	WB: 1/500 - 1/2000. IHC: 1/100 - 1/300. ELISA: 1/40000.. IF 1:50-200
Concentration	1 mg/ml
Purity	≥90%
Storage Stability	-20°C/1 year
Synonyms	GPRIN2; KIAA0514; G protein-regulated inducer of neurite outgrowth 2; GRIN2
Observed Band	47kD
Cell Pathway	
Tissue Specificity	Expressed specifically in the cerebellum.
Function	function:May be involved in neurite outgrowth.,subunit:Interacts with activated forms of GNAO1 and GNAZ.,tissue specificity:Expressed specifically in the cerebellum.,
Background	function:May be involved in neurite outgrowth.,subunit:Interacts with activated forms of GNAO1 and GNAZ.,tissue specificity:Expressed specifically in the cerebellum.,
matters needing attention	Avoid repeated freezing and thawing!
Usage suggestions	This product can be used in immunological reaction related experiments. For more information, please consult technical personnel.



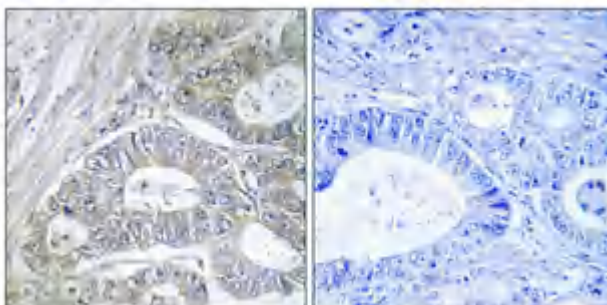
Products Images



Western Blot analysis of various cells using GRIN2 Polyclonal Antibody



Immunohistochemical analysis of paraffin-embedded Human brain. Antibody was diluted at 1:100(4° overnight). High-pressure and temperature Tris-EDTA,pH8.0 was used for antigen retrieval. Negative contrl (right) obtained from antibody was pre-absorbed by immunogen peptide.



Immunohistochemical analysis of paraffin-embedded Human colon cancer. Antibody was diluted at 1:100(4° overnight). High-pressure and temperature Tris-EDTA,pH8.0 was used for antigen retrieval. Negative contrl (right) obtained from antibody was pre-absorbed by immunogen peptide.