



# Neurexophilin-4 Polyclonal Antibody

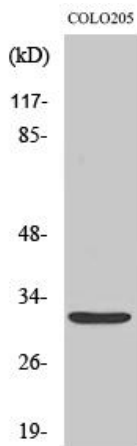
<b>Catalog No</b>	YP-Ab-12754
<b>Isotype</b>	IgG
<b>Reactivity</b>	Human;Rat
<b>Applications</b>	WB;IHC;IF;ELISA
<b>Gene Name</b>	NXPH4
<b>Protein Name</b>	Neurexophilin-4
<b>Immunogen</b>	The antiserum was produced against synthesized peptide derived from human NXPH4. AA range:216-265
<b>Specificity</b>	Neurexophilin-4 Polyclonal Antibody detects endogenous levels of Neurexophilin-4 protein.
<b>Formulation</b>	Liquid in PBS containing 50% glycerol, 0.5% BSA and 0.02% sodium azide.
<b>Source</b>	Polyclonal, Rabbit,IgG
<b>Purification</b>	The antibody was affinity-purified from rabbit antiserum by affinity-chromatography using epitope-specific immunogen.
<b>Dilution</b>	WB: 1/500 - 1/2000. IHC: 1/100 - 1/300. ELISA: 1/40000.. IF 1:50-200
<b>Concentration</b>	1 mg/ml
<b>Purity</b>	≥90%
<b>Storage Stability</b>	-20°C/1 year
<b>Synonyms</b>	NXPH4; NPH4; Neurexophilin-4
<b>Observed Band</b>	33kD
<b>Cell Pathway</b>	Secreted .
<b>Tissue Specificity</b>	Expressed in brain, spleen, and testis.
<b>Function</b>	function:May be signaling molecules that resemble neuropeptides and that act by binding to alpha-neurexins and possibly other receptors .,PTM:May be proteolytically processed at the boundary between the N-terminal non-conserved and the central conserved domain in neuron-like cells.,similarity:Belongs to the neurexophilin family.,tissue specificity:Expressed in brain, spleen, and testis.,
<b>Background</b>	function:May be signaling molecules that resemble neuropeptides and that act by binding to alpha-neurexins and possibly other receptors .,PTM:May be proteolytically processed at the boundary between the N-terminal non-conserved and the central conserved domain in neuron-like cells.,similarity:Belongs to the neurexophilin family.,tissue specificity:Expressed in brain, spleen, and testis.,
<b>matters needing attention</b>	Avoid repeated freezing and thawing!



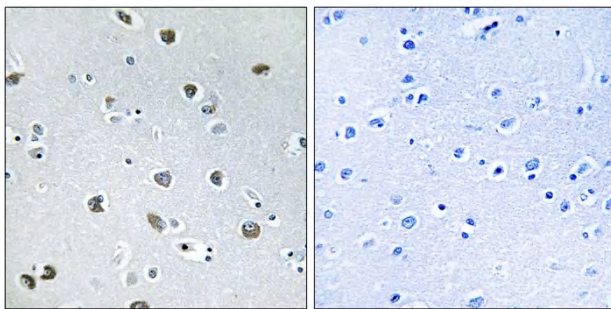
Usage suggestions

This product can be used in immunological reaction related experiments. For more information, please consult technical personnel.

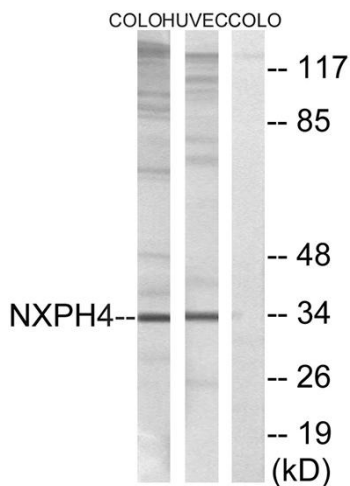
Products Images



Western Blot analysis of various cells using Neurexophilin-4 Polyclonal Antibody



Immunohistochemistry analysis of paraffin-embedded human brain tissue, using NXPH4 Antibody. The picture on the right is blocked with the synthesized peptide.



Western blot analysis of lysates from COLO and HUVEC cells, using NXPH4 Antibody. The lane on the right is blocked with the synthesized peptide.