



# Neurocalcin $\delta$ Polyclonal Antibody

<b>Catalog No</b>	YP-Ab-12757
<b>Isotype</b>	IgG
<b>Reactivity</b>	Human;Mouse;Rat
<b>Applications</b>	IHC;IF;ELISA
<b>Gene Name</b>	NCALD
<b>Protein Name</b>	Neurocalcin-delta
<b>Immunogen</b>	Synthesized peptide derived from Neurocalcin $\delta$ . at AA range: 370-450
<b>Specificity</b>	Neurocalcin $\delta$ Polyclonal Antibody detects endogenous levels of Neurocalcin $\delta$ protein.
<b>Formulation</b>	Liquid in PBS containing 50% glycerol, 0.5% BSA and 0.02% sodium azide.
<b>Source</b>	Polyclonal, Rabbit,IgG
<b>Purification</b>	The antibody was affinity-purified from rabbit antiserum by affinity-chromatography using epitope-specific immunogen.
<b>Dilution</b>	IHC: 1/100 - 1/300. ELISA: 1/20000.. IF 1:50-200
<b>Concentration</b>	1 mg/ml
<b>Purity</b>	$\geq 90\%$
<b>Storage Stability</b>	-20°C/1 year
<b>Synonyms</b>	NCALD; Neurocalcin-delta
<b>Observed Band</b>	
<b>Cell Pathway</b>	intracellular,cytosol,clathrin coat of trans-Golgi network vesicle,extracellular exosome,
<b>Tissue Specificity</b>	Retina, cerebrum, cerebellum, brain stem, spinal cord, testis, ovary and small intestine.
<b>Function</b>	function:May be involved in the calcium-dependent regulation of rhodopsin phosphorylation. Binds three calcium ions.,similarity:Belongs to the recoverin family.,similarity:Contains 4 EF-hand domains.,tissue specificity:Retina, cerebrum, cerebellum, brain stem, spinal cord, testis, ovary and small intestine.,
<b>Background</b>	This gene encodes a member of the neuronal calcium sensor (NCS) family of calcium-binding proteins. The protein contains an N-terminal myristoylation signal and four EF-hand calcium binding loops. The protein is cytosolic at resting calcium levels; however, elevated intracellular calcium levels induce a conformational change that exposes the myristoyl group, resulting in protein association with membranes and partial co-localization with the perinuclear trans-golgi network. The protein is thought to be a regulator of G protein-coupled receptor signal transduction. Several alternatively spliced variants of this gene have been determined, all of which encode the same protein; additional variants may exist but their biological validity has not been determined. [provided by RefSeq, Jul 2008],



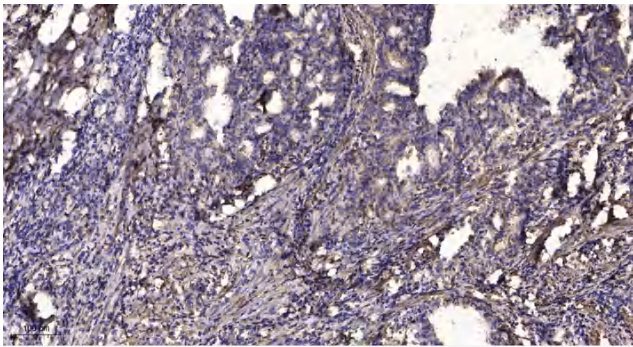
**matters needing attention**

Avoid repeated freezing and thawing!

**Usage suggestions**

This product can be used in immunological reaction related experiments. For more information, please consult technical personnel.

## Products Images



Immunohistochemical analysis of paraffin-embedded human Gastric adenocarcinoma. 1, Antibody was diluted at 1:200(4° overnight). 2, Tris-EDTA,pH9.0 was used for antigen retrieval. 3,Secondary antibody was diluted at 1:200(room temperature, 45min).