

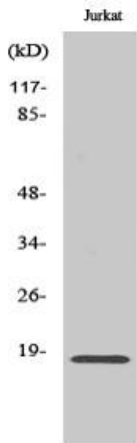


Neuromedin-S Polyclonal Antibody

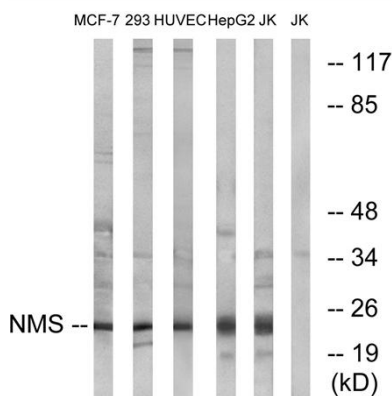
Catalog No	YP-Ab-12760
Isotype	IgG
Reactivity	Human;Rat;Mouse;
Applications	WB;IHC;IF;ELISA
Gene Name	NMS
Protein Name	Neuromedin-S
Immunogen	The antiserum was produced against synthesized peptide derived from human NMS. AA range:104-153
Specificity	Neuromedin-S Polyclonal Antibody detects endogenous levels of Neuromedin-S protein.
Formulation	Liquid in PBS containing 50% glycerol, 0.5% BSA and 0.02% sodium azide.
Source	Polyclonal, Rabbit,IgG
Purification	The antibody was affinity-purified from rabbit antiserum by affinity-chromatography using epitope-specific immunogen.
Dilution	WB: 1/500 - 1/2000. IHC: 1/100 - 1/300. ELISA: 1/40000.. IF 1:50-200
Concentration	1 mg/ml
Purity	≥90%
Storage Stability	-20°C/1 year
Synonyms	NMS; Neuromedin-S
Observed Band	24kD
Cell Pathway	Secreted .
Tissue Specificity	Brain,
Function	function:Implicated in the regulation of circadian rhythms through autocrine and/or paracrine actions.,similarity:Belongs to the NmU family.,
Background	This gene encodes a member of the neuromedin family of neuropeptides. The encoded preproprotein is proteolytically processed to generate a biologically active neuropeptide that plays a role in the regulation of circadian rhythm, anorexigenic action, antidiuretic action, cardiovascular function and stimulation of oxytocin and vasopressin release. [provided by RefSeq, May 2016],
matters needing attention	Avoid repeated freezing and thawing!
Usage suggestions	This product can be used in immunological reaction related experiments. For more information, please consult technical personnel.



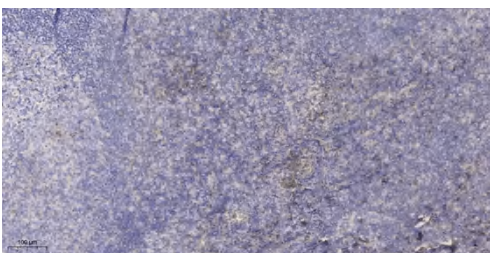
Products Images



Western Blot analysis of various cells using Neuromedin-S Polyclonal Antibody diluted at 1:1000



Western blot analysis of lysates from Jurkat, HepG2, HUVEC, 293, and MCF-7 cells, using NMS Antibody. The lane on the right is blocked with the synthesized peptide.



Immunohistochemical analysis of paraffin-embedded human tonsil. 1, Antibody was diluted at 1:200(4° overnight). 2, Tris-EDTA,pH9.0 was used for antigen retrieval. 3,Secondary antibody was diluted at 1:200(room temperature, 30min).