



Neuron Navigator 2 Polyclonal Antibody

| | |
|---------------------------|---|
| Catalog No | YP-Ab-12763 |
| Isotype | IgG |
| Reactivity | Human;Rat;Mouse; |
| Applications | IHC;IF;ELISA |
| Gene Name | NAV2 |
| Protein Name | Neuron navigator 2 |
| Immunogen | Synthesized peptide derived from Neuron Navigator 2 . at AA range: 2040-2120 |
| Specificity | Neuron Navigator 2 Polyclonal Antibody detects endogenous levels of Neuron Navigator 2 protein. |
| Formulation | Liquid in PBS containing 50% glycerol, 0.5% BSA and 0.02% sodium azide. |
| Source | Polyclonal, Rabbit,IgG |
| Purification | The antibody was affinity-purified from rabbit antiserum by affinity-chromatography using epitope-specific immunogen. |
| Dilution | IHC: 1/100 - 1/300. ELISA: 1/10000.. IF 1:50-200 |
| Concentration | 1 mg/ml |
| Purity | ≥90% |
| Storage Stability | -20°C/1 year |
| Synonyms | NAV2; HELAD1; KIAA1419; POMFIL2; RAINB1; STEERIN2; Neuron navigator 2; Helicase APC down-regulated 1; Pore membrane and/or filament-interacting-like protein 2; Retinoic acid inducible in neuroblastoma 1; Steerin-2; Unc-53 homolog 2; unc53H2 |
| Observed Band | |
| Cell Pathway | Nucleus . |
| Tissue Specificity | Highly expressed in the brain, kidney and liver. Also expressed in the thyroid, mammary gland, spinal cord, heart, placenta and lung. Abundantly expressed in colon cancers. |
| Function | alternative products:Additional isoforms may exist,caution:PubMed:15158073 experiments have been carried out in mouse.,caution:The sequence shown here is derived from an Ensembl automatic analysis pipeline and should be considered as preliminary data.,developmental stage:Highly expressed in the nervous system of developing embryos. Also expressed in fetal heart, liver and kidney.,function:Possesses 3' to 5' helicase activity and exonuclease activity. Involved in neuronal development, specifically in the development of different sensory organs.,induction:By all-trans retinoic acid (atRA). Up-regulated in colorectal carcinomas.,similarity:Belongs to the Nav/unc-53 family.,similarity:Contains 1 CH (calponin-homology) domain.,tissue specificity:Highly expressed in the brain, kidney and liver. Also expressed in the |



thyroid, mammary gland, spinal cord, heart, placenta and lung. Abundantly expr

Background

This gene encodes a member of the neuron navigator gene family, which may play a role in cellular growth and migration. Multiple transcript variants encoding different isoforms have been found for this gene. [provided by RefSeq, Oct 2011],

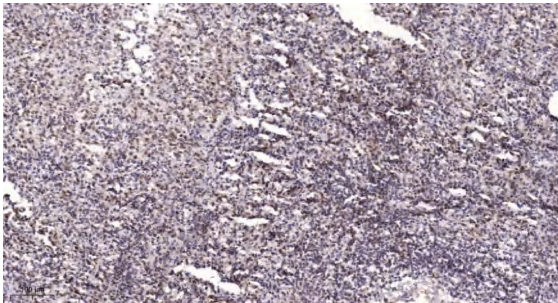
matters needing attention

Avoid repeated freezing and thawing!

Usage suggestions

This product can be used in immunological reaction related experiments. For more information, please consult technical personnel.

Products Images



Immunohistochemical analysis of paraffin-embedded human spleen. 1, Antibody was diluted at 1:200(4° overnight). 2, Tris-EDTA,pH9.0 was used for antigen retrieval. 3,Secondary antibody was diluted at 1:200(room temperature, 45min).