



NMBR Polyclonal Antibody

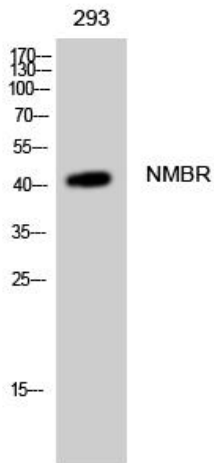
Catalog No	YP-Ab-12772
Isotype	IgG
Reactivity	Human;Mouse;Rat
Applications	WB;IF;ELISA
Gene Name	NMBR
Protein Name	Neuromedin-B receptor
Immunogen	The antiserum was produced against synthesized peptide derived from human NMBR. AA range:221-270
Specificity	NMBR Polyclonal Antibody detects endogenous levels of NMBR protein.
Formulation	Liquid in PBS containing 50% glycerol, 0.5% BSA and 0.02% sodium azide.
Source	Polyclonal, Rabbit,IgG
Purification	The antibody was affinity-purified from rabbit antiserum by affinity-chromatography using epitope-specific immunogen.
Dilution	Western Blot: 1/500 - 1/2000. Immunofluorescence: 1/200 - 1/1000. ELISA: 1/5000. Not yet tested in other applications.
Concentration	1 mg/ml
Purity	≥90%
Storage Stability	-20°C/1 year
Synonyms	NMBR; Neuromedin-B receptor; NMB-R; Epididymis tissue protein Li 185a; Neuromedin-B-preferring bombesin receptor
Observed Band	43kD
Cell Pathway	Cell membrane ; Multi-pass membrane protein .
Tissue Specificity	Expressed in epididymis (at protein level).
Function	function:Receptor for neuromedin-B.,similarity:Belongs to the G-protein coupled receptor 1 family.,
Background	This gene encodes a 7-transmembrane G protein-coupled receptor that binds neuromedin B, which is a growth factor and mitogen for gastrointestinal epithelial tissue and for normal and neoplastic lung. This receptor may play a role in smooth muscle contraction, neuronal responses, and the regulation of cell growth. Antagonists of this receptor have a potential therapeutic use in inhibiting tumor cell growth. Polymorphisms in this gene may be associated with a susceptibility for schizophrenia. Alternative splicing of this gene results in multiple transcript variants. [provided by RefSeq, Apr 2016],
matters needing attention	Avoid repeated freezing and thawing!



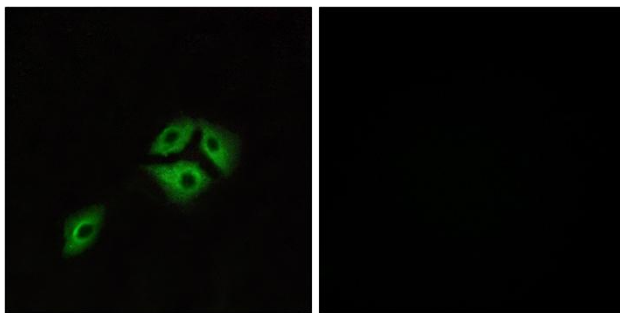
Usage suggestions

This product can be used in immunological reaction related experiments. For more information, please consult technical personnel.

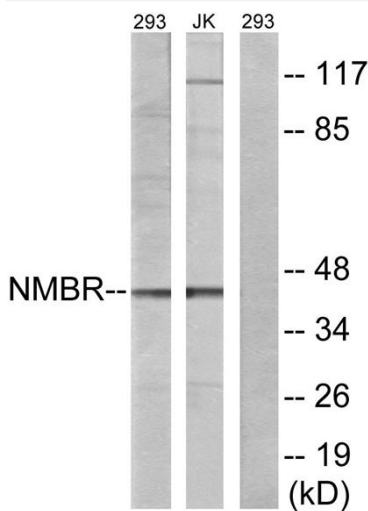
Products Images



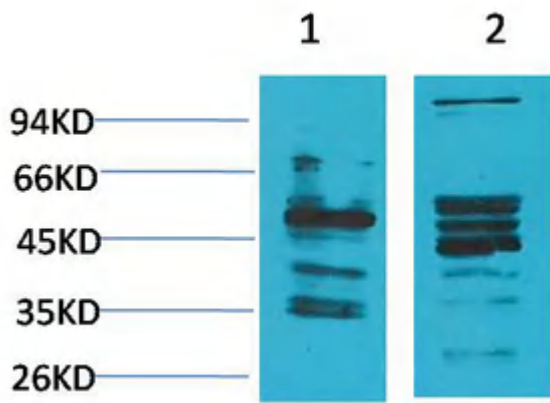
Western Blot analysis of 293 cells using NMBR Polyclonal Antibody



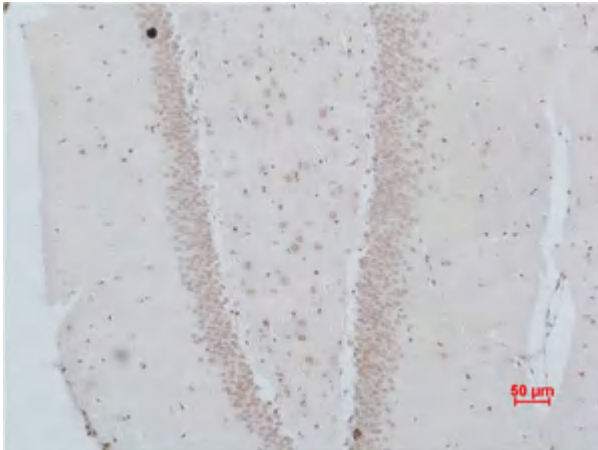
Immunofluorescence analysis of A549 cells, using NMBR Antibody. The picture on the right is blocked with the synthesized peptide.



Western blot analysis of lysates from 293 and Jurkat cells, using NMBR Antibody. The lane on the right is blocked with the synthesized peptide.



Western blot analysis of 1) Human Brain Tissue, 2) Rat Brain Tissue using NMBR Polyclonal Antibody. Secondary antibody(catalog#:RS0002) was diluted at 1:20000



Immunohistochemical analysis of paraffin-embedded Rat Brain Tissue using NMBR Polyclonal Antibody.