



P311 Polyclonal Antibody

Catalog No	YP-Ab-12787
Isotype	IgG
Reactivity	Human;Mouse;Rat
Applications	IHC;IF;ELISA
Gene Name	NREP
Protein Name	Neuronal regeneration-related protein
Immunogen	The antiserum was produced against synthesized peptide derived from human C5orf13. AA range:13-62
Specificity	P311 Polyclonal Antibody detects endogenous levels of P311 protein.
Formulation	Liquid in PBS containing 50% glycerol, 0.5% BSA and 0.02% sodium azide.
Source	Polyclonal, Rabbit,IgG
Purification	The antibody was affinity-purified from rabbit antiserum by affinity-chromatography using epitope-specific immunogen.
Dilution	IHC: 1/100 - 1/300. ELISA: 1/40000.. IF 1:50-200
Concentration	1 mg/ml
Purity	≥90%
Storage Stability	-20°C/1 year
Synonyms	NREP; C5orf13; P311; Neuronal regeneration-related protein; Neuronal protein 3.1; Protein p311
Observed Band	
Cell Pathway	Cytoplasm .
Tissue Specificity	Expressed in lung (at protein level).
Function	regulation of transforming growth factor beta receptor signaling pathway,
Background	P311, also known as C5orf13 (chromosome 5 open reading frame 13), D4S114, PTZ17 or PRO1873, is a 68 amino acid cytoplasmic protein involved in cellular differentiation, neural function and axonal regeneration. Found in the granular layer of the cerebellum, P311 is expressed at lower levels in hippocampus, olfactory bulb, kidney, liver and heart and when expressed ectopically, P311 augments glioma motility. P311 is enriched in mice within the superficial cortical layers and striatum at E20 and the germinal zones at E17. Known to interact with Filamin 1, P311 regulates retinoic-acid lipid-droplet biogenesis, induces myofibroblast ameboid migration and the differentiation of fibroblasts into myofibroblasts. Ser-59 phosphorylation decreases P311 stability; the gene encoding P311 maps to human chromosome 5q22.



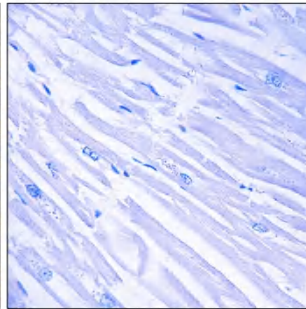
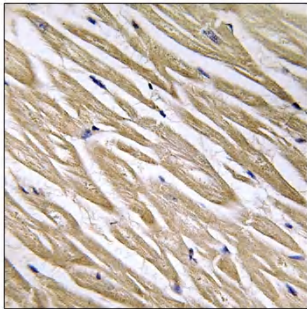
matters needing attention

Avoid repeated freezing and thawing!

Usage suggestions

This product can be used in immunological reaction related experiments. For more information, please consult technical personnel.

Products Images



Immunohistochemistry analysis of paraffin-embedded human heart tissue, using C5orf13 Antibody. The picture on the right is blocked with the synthesized peptide.