



# SR-1F Polyclonal Antibody

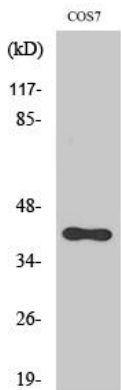
|                                  |                                                                                                                                                                                                                                                                                                                                                  |
|----------------------------------|--------------------------------------------------------------------------------------------------------------------------------------------------------------------------------------------------------------------------------------------------------------------------------------------------------------------------------------------------|
| <b>Catalog No</b>                | YP-Ab-12813                                                                                                                                                                                                                                                                                                                                      |
| <b>Isotype</b>                   | IgG                                                                                                                                                                                                                                                                                                                                              |
| <b>Reactivity</b>                | Human;Mouse;Rat;Monkey                                                                                                                                                                                                                                                                                                                           |
| <b>Applications</b>              | WB;ELISA;IHC                                                                                                                                                                                                                                                                                                                                     |
| <b>Gene Name</b>                 | HTR1F                                                                                                                                                                                                                                                                                                                                            |
| <b>Protein Name</b>              | 5-hydroxytryptamine receptor 1F                                                                                                                                                                                                                                                                                                                  |
| <b>Immunogen</b>                 | The antiserum was produced against synthesized peptide derived from human 5-HT-1F. AA range:101-150                                                                                                                                                                                                                                              |
| <b>Specificity</b>               | SR-1F Polyclonal Antibody detects endogenous levels of SR-1F protein.                                                                                                                                                                                                                                                                            |
| <b>Formulation</b>               | Liquid in PBS containing 50% glycerol, 0.5% BSA and 0.02% sodium azide.                                                                                                                                                                                                                                                                          |
| <b>Source</b>                    | Polyclonal, Rabbit,IgG                                                                                                                                                                                                                                                                                                                           |
| <b>Purification</b>              | The antibody was affinity-purified from rabbit antiserum by affinity-chromatography using epitope-specific immunogen.                                                                                                                                                                                                                            |
| <b>Dilution</b>                  | WB 1:500-2000;IHC-p 1:50-300; ELISA 2000-20000                                                                                                                                                                                                                                                                                                   |
| <b>Concentration</b>             | 1 mg/ml                                                                                                                                                                                                                                                                                                                                          |
| <b>Purity</b>                    | ≥90%                                                                                                                                                                                                                                                                                                                                             |
| <b>Storage Stability</b>         | -20°C/1 year                                                                                                                                                                                                                                                                                                                                     |
| <b>Synonyms</b>                  | HTR1F; HTR1EL; 5-hydroxytryptamine receptor 1F; 5-HT-1F; 5-HT1F; Serotonin receptor 1F                                                                                                                                                                                                                                                           |
| <b>Observed Band</b>             | 38kD                                                                                                                                                                                                                                                                                                                                             |
| <b>Cell Pathway</b>              | Cell membrane ; Multi-pass membrane protein .                                                                                                                                                                                                                                                                                                    |
| <b>Tissue Specificity</b>        | Brain,                                                                                                                                                                                                                                                                                                                                           |
| <b>Function</b>                  | function:This is one of the several different receptors for 5-hydroxytryptamine (serotonin), a biogenic hormone that functions as a neurotransmitter, a hormone, and a mitogen. The activity of this receptor is mediated by G proteins that inhibit adenylate cyclase activity.,similarity:Belongs to the G-protein coupled receptor 1 family., |
| <b>Background</b>                | function:This is one of the several different receptors for 5-hydroxytryptamine (serotonin), a biogenic hormone that functions as a neurotransmitter, a hormone, and a mitogen. The activity of this receptor is mediated by G proteins that inhibit adenylate cyclase activity.,similarity:Belongs to the G-protein coupled receptor 1 family., |
| <b>matters needing attention</b> | Avoid repeated freezing and thawing!                                                                                                                                                                                                                                                                                                             |



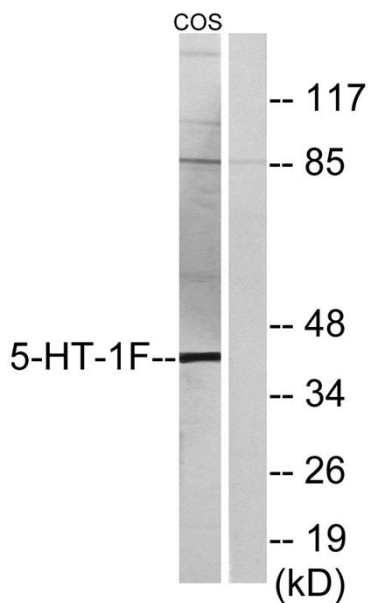
### Usage suggestions

This product can be used in immunological reaction related experiments. For more information, please consult technical personnel.

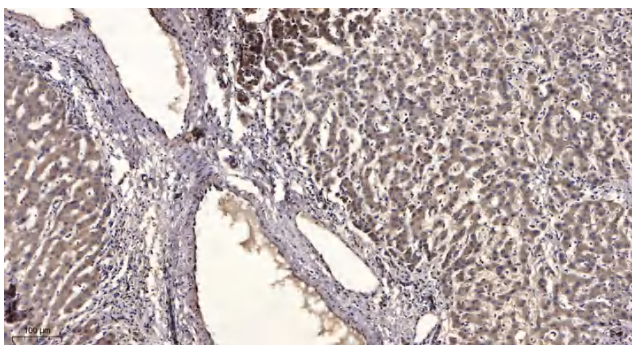
## Products Images



Western Blot analysis of various cells using SR-1F Polyclonal Antibody diluted at 1:1000



Western blot analysis of lysates from COS7 cells, using 5-HT-1F Antibody. The lane on the right is blocked with the synthesized peptide.



Immunohistochemical analysis of paraffin-embedded human liver cancer. 1, Antibody was diluted at 1:200(4° overnight). 2, Tris-EDTA,pH9.0 was used for antigen retrieval. 3,Secondary antibody was diluted at 1:200(room temperature, 45min).