



## SR-4 Polyclonal Antibody

<b>Catalog No</b>	YP-Ab-12819
<b>Isotype</b>	IgG
<b>Reactivity</b>	Human;Mouse;Rat
<b>Applications</b>	WB;IHC;IF;ELISA
<b>Gene Name</b>	HTR4
<b>Protein Name</b>	5-hydroxytryptamine receptor 4
<b>Immunogen</b>	The antiserum was produced against synthesized peptide derived from human 5-HT-4. AA range:21-70
<b>Specificity</b>	SR-4 Polyclonal Antibody detects endogenous levels of SR-4 protein.
<b>Formulation</b>	Liquid in PBS containing 50% glycerol, 0.5% BSA and 0.02% sodium azide.
<b>Source</b>	Polyclonal, Rabbit,IgG
<b>Purification</b>	The antibody was affinity-purified from rabbit antiserum by affinity-chromatography using epitope-specific immunogen.
<b>Dilution</b>	Western Blot: 1/500 - 1/2000. Immunohistochemistry: 1/100 - 1/300. Immunofluorescence: 1/200 - 1/1000. ELISA: 1/5000. Not yet tested in other applications.
<b>Concentration</b>	1 mg/ml
<b>Purity</b>	≥90%
<b>Storage Stability</b>	-20°C/1 year
<b>Synonyms</b>	HTR4; 5-hydroxytryptamine receptor 4; 5-HT-4; 5-HT4; Serotonin receptor 4
<b>Observed Band</b>	43kD
<b>Cell Pathway</b>	Cell membrane; Multi-pass membrane protein. Endosome. Interaction with SNX27 mediates recruitment to early endosomes, while interaction with SLC9A3R1 and EZR might target the protein to specialized subcellular regions, such as microvilli. .
<b>Tissue Specificity</b>	Isoform 5-HT4(A) is expressed in ileum, brain, and atrium, but not in the ventricle.
<b>Function</b>	alternative products:Additional isoforms seem to exist,function:This is one of the several different receptors for 5-hydroxytryptamine (serotonin), a biogenic hormone that functions as a neurotransmitter, a hormone, and a mitogen. The activity of this receptor is mediated by G proteins that stimulate adenylate cyclase.,similarity:Belongs to the G-protein coupled receptor 1 family.,subcellular location:Interaction with SNX27 mediates recruitment to early endosomes, while interaction with SLC9A3R1 and EZR might target the protein to specialized subcellular regions, such as microvilli.,subunit:Isoform 5-HT4(A) interacts with MAGI2, MPP3, SLC9A3R1 and SNX27 isoforms 1 and 2. Isoform 5-HT4(E) interacts with INADL, NOS1 and SEC23A. Isoform 5-HT4(A) forms a complex including SLC9A3R1 and EZR.,tissue specificity:Isoform 5-HT4(A) is expressed in ileum, brain, and atrium, but not in the ventricle.



### Background

This gene is a member of the family of serotonin receptors, which are G protein coupled receptors that stimulate cAMP production in response to serotonin (5-hydroxytryptamine). The gene product is a glycosylated transmembrane protein that functions in both the peripheral and central nervous system to modulate the release of various neurotransmitters. Multiple transcript variants encoding proteins with distinct C-terminal sequences have been described. [provided by RefSeq, May 2010],

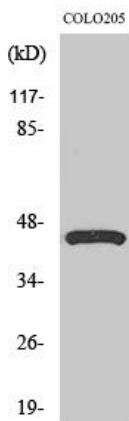
### matters needing attention

Avoid repeated freezing and thawing!

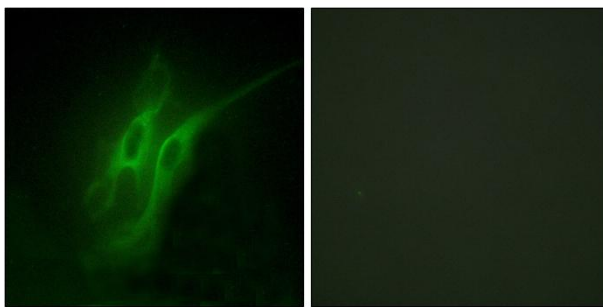
### Usage suggestions

This product can be used in immunological reaction related experiments. For more information, please consult technical personnel.

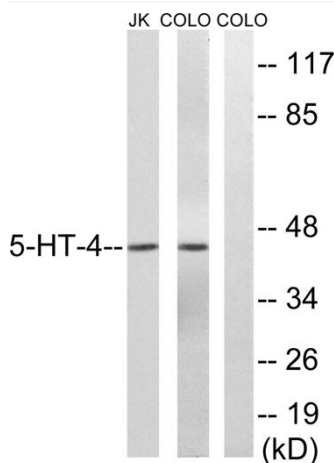
## Products Images



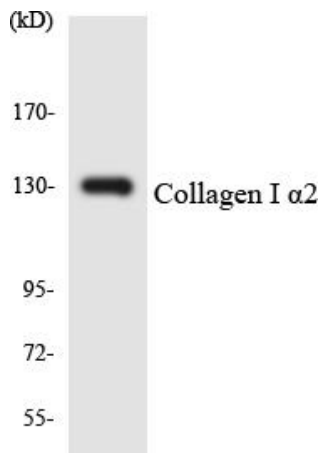
Western Blot analysis of various cells using SR-4 Polyclonal Antibody



Immunofluorescence analysis of HeLa cells, using 5-HT-4 Antibody. The picture on the right is blocked with the synthesized peptide.



Western blot analysis of lysates from Jurkat/COLO205, using 5-HT-4 Antibody. The lane on the right is blocked with the synthesized peptide.



Western blot analysis of the lysates from 293 cells using Collagen I  $\alpha$ 2 antibody.