



V1RL2 Polyclonal Antibody

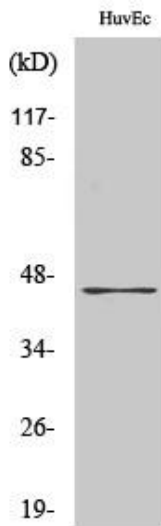
Catalog No	YP-Ab-12836
Isotype	IgG
Reactivity	Human;Rat;Mouse;
Applications	WB;IF;ELISA
Gene Name	VN1R2
Protein Name	Vomeronasal type-1 receptor 2
Immunogen	The antiserum was produced against synthesized peptide derived from human VN1R2. AA range:88-137
Specificity	V1RL2 Polyclonal Antibody detects endogenous levels of V1RL2 protein.
Formulation	Liquid in PBS containing 50% glycerol, 0.5% BSA and 0.02% sodium azide.
Source	Polyclonal, Rabbit,IgG
Purification	The antibody was affinity-purified from rabbit antiserum by affinity-chromatography using epitope-specific immunogen.
Dilution	Western Blot: 1/500 - 1/2000. Immunofluorescence: 1/200 - 1/1000. ELISA: 1/40000. Not yet tested in other applications.
Concentration	1 mg/ml
Purity	≥90%
Storage Stability	-20°C/1 year
Synonyms	VN1R2; V1RL2; Vomeronasal type-1 receptor 2; G-protein coupled receptor GPCR25; hGPCR25; V1r-like receptor 2
Observed Band	46kD
Cell Pathway	Cell membrane; Multi-pass membrane protein.
Tissue Specificity	
Function	function:Putative pheromone receptor.,miscellaneous:The chimpanzee, gorilla and orangutan orthologous proteins do not exist, their genes are pseudogenes.,online information:No one nose - Issue 61 of August 2005,similarity:Belongs to the G-protein coupled receptor 1 family.,
Background	function:Putative pheromone receptor.,miscellaneous:The chimpanzee, gorilla and orangutan orthologous proteins do not exist, their genes are pseudogenes.,online information:No one nose - Issue 61 of August 2005,similarity:Belongs to the G-protein coupled receptor 1 family.,
matters needing attention	Avoid repeated freezing and thawing!



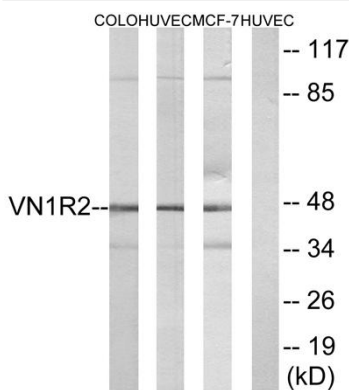
Usage suggestions

This product can be used in immunological reaction related experiments. For more information, please consult technical personnel.

Products Images



Western Blot analysis of various cells using V1RL2 Polyclonal Antibody. Secondary antibody(catalog#:RS0002) was diluted at 1:20000



Western blot analysis of lysates from HUVEC, COLO, and MCF-7 cells, using VN1R2 Antibody. The lane on the right is blocked with the synthesized peptide.