



# V1RL3 Polyclonal Antibody

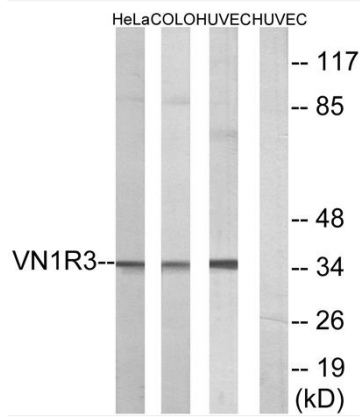
<b>Catalog No</b>	YP-Ab-12837
<b>Isotype</b>	IgG
<b>Reactivity</b>	Human;Rat;Mouse;
<b>Applications</b>	WB;IF;ELISA
<b>Gene Name</b>	VN1R3
<b>Protein Name</b>	Vomeronasal type-1 receptor 3
<b>Immunogen</b>	The antiserum was produced against synthesized peptide derived from human VN1R3. AA range:129-178
<b>Specificity</b>	V1RL3 Polyclonal Antibody detects endogenous levels of V1RL3 protein.
<b>Formulation</b>	Liquid in PBS containing 50% glycerol, 0.5% BSA and 0.02% sodium azide.
<b>Source</b>	Polyclonal, Rabbit,IgG
<b>Purification</b>	The antibody was affinity-purified from rabbit antiserum by affinity-chromatography using epitope-specific immunogen.
<b>Dilution</b>	Western Blot: 1/500 - 1/2000. Immunofluorescence: 1/200 - 1/1000. ELISA: 1/5000. Not yet tested in other applications.
<b>Concentration</b>	1 mg/ml
<b>Purity</b>	≥90%
<b>Storage Stability</b>	-20°C/1 year
<b>Synonyms</b>	VN1R3; V1RL3; FKSG46; Vomeronasal type-1 receptor 3; V1r-like receptor 3
<b>Observed Band</b>	35kD
<b>Cell Pathway</b>	Cell membrane; Multi-pass membrane protein.
<b>Tissue Specificity</b>	
<b>Function</b>	function:Putative pheromone receptor.,miscellaneous:The gorilla and orangutan orthologous proteins do not exist, their genes are pseudogenes.,online information:No one nose - Issue 61 of August 2005,polymorphism:There seems to be a deletion in the gene coding for this protein in about 98% of the population.,similarity:Belongs to the G-protein coupled receptor 1 family.,
<b>Background</b>	function:Putative pheromone receptor.,miscellaneous:The gorilla and orangutan orthologous proteins do not exist, their genes are pseudogenes.,online information:No one nose - Issue 61 of August 2005,polymorphism:There seems to be a deletion in the gene coding for this protein in about 98% of the population.,similarity:Belongs to the G-protein coupled receptor 1 family.,
<b>matters needing attention</b>	Avoid repeated freezing and thawing!



### Usage suggestions

This product can be used in immunological reaction related experiments. For more information, please consult technical personnel.

## Products Images



Western blot analysis of lysates from HUVEC, HeLa, and COLO cells, using VN1R3 Antibody. The lane on the right is blocked with the synthesized peptide.