



# Vangl1 Polyclonal Antibody

<b>Catalog No</b>	YP-Ab-12839
<b>Isotype</b>	IgG
<b>Reactivity</b>	Human;Mouse
<b>Applications</b>	WB;ELISA
<b>Gene Name</b>	VANGL1
<b>Protein Name</b>	Vang-like protein 1
<b>Immunogen</b>	The antiserum was produced against synthesized peptide derived from human VANGL1. AA range:301-350
<b>Specificity</b>	Vangl1 Polyclonal Antibody detects endogenous levels of Vangl1 protein.
<b>Formulation</b>	Liquid in PBS containing 50% glycerol, 0.5% BSA and 0.02% sodium azide.
<b>Source</b>	Polyclonal, Rabbit,IgG
<b>Purification</b>	The antibody was affinity-purified from rabbit antiserum by affinity-chromatography using epitope-specific immunogen.
<b>Dilution</b>	Western Blot: 1/500 - 1/2000. ELISA: 1/20000. Not yet tested in other applications.
<b>Concentration</b>	1 mg/ml
<b>Purity</b>	≥90%
<b>Storage Stability</b>	-20°C/1 year
<b>Synonyms</b>	VANGL1; STB2; Vang-like protein 1; Loop-tail protein 2 homolog; LPP2; Strabismus 2; Van Gogh-like protein 1
<b>Observed Band</b>	50kD
<b>Cell Pathway</b>	Cell membrane ; Multi-pass membrane protein .
<b>Tissue Specificity</b>	According to PubMed:11956595, ubiquitously expressed. According to PubMed:12011995, expressed specifically in testis and ovary.
<b>Function</b>	disease:Defects in VANGL1 are a cause of neural tube defects (NTD) [MIM:182940]. NTD are congenital malformations. The most common forms of NTD are described as open defects (including anencephaly and myelomeningocele, or spina bifida), which result from the failure of fusion in the cranial and spinal region of the neural tube, respectively. Other open dysraphisms (including myeloschisis, hemimyelomeningocele, and hemimyelocele) are sometimes associated with a Chiari type 2 malformation. A number of skin-covered (closed) NTD are categorized clinically depending on the presence of a subcutaneous mass (lipomyeloschisis, lipomyelomeningocele, meningocele, and myelocystocele) or the absence of such a mass (complex dysraphic states, including split cord malformations, dermal sinus, caudal regression, and segmental spinal dysgenesis).,disease:Defects in VANGL1 are a cause of sacral defect with



**Background**

This gene encodes a member of the tetraspanin family. The encoded protein may be involved in mediating intestinal trefoil factor induced wound healing in the intestinal mucosa. Mutations in this gene are associated with neural tube defects. Alternate splicing results in multiple transcript variants. [provided by RefSeq, Feb 2010],

**matters needing attention**

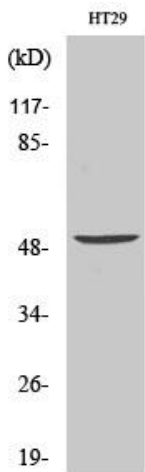
Avoid repeated freezing and thawing!

**Usage suggestions**

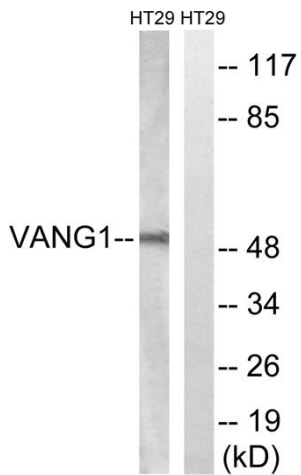
This product can be used in immunological reaction related experiments. For more information, please consult technical personnel.



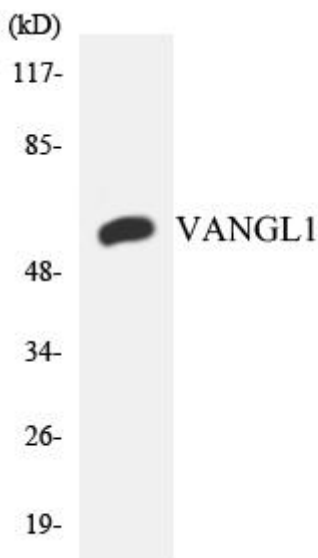
## Products Images



Western Blot analysis of various cells using Vangl1 Polyclonal Antibody. Secondary antibody(catalog#:RS0002) was diluted at 1:20000



Western blot analysis of lysates from HT-29 cells, using VANGL1 Antibody. The lane on the right is blocked with the synthesized peptide.



Western blot analysis of the lysates from HeLa cells using VANGL1 antibody.