



# VN1R4 Polyclonal Antibody

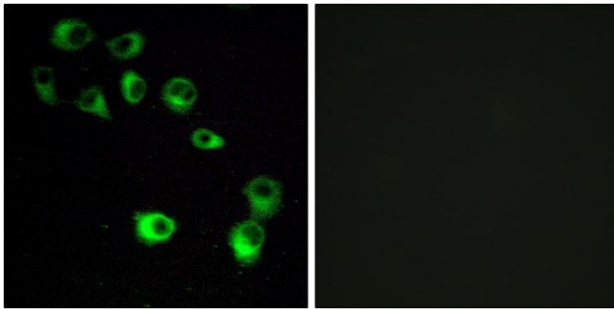
<b>Catalog No</b>	YP-Ab-12841
<b>Isotype</b>	IgG
<b>Reactivity</b>	Human;Monkey
<b>Applications</b>	WB;IF;ELISA
<b>Gene Name</b>	VN1R4
<b>Protein Name</b>	Vomeronasal type-1 receptor 4
<b>Immunogen</b>	The antiserum was produced against synthesized peptide derived from human VN1R4. AA range:88-137
<b>Specificity</b>	VN1R4 Polyclonal Antibody detects endogenous levels of VN1R4 protein.
<b>Formulation</b>	Liquid in PBS containing 50% glycerol, 0.5% BSA and 0.02% sodium azide.
<b>Source</b>	Polyclonal, Rabbit,IgG
<b>Purification</b>	The antibody was affinity-purified from rabbit antiserum by affinity-chromatography using epitope-specific immunogen.
<b>Dilution</b>	Western Blot: 1/500 - 1/2000. Immunofluorescence: 1/200 - 1/1000. ELISA: 1/20000. Not yet tested in other applications.
<b>Concentration</b>	1 mg/ml
<b>Purity</b>	≥90%
<b>Storage Stability</b>	-20°C/1 year
<b>Synonyms</b>	VN1R4; V1RL4; Vomeronasal type-1 receptor 4; G-protein coupled receptor GPCR27; hGPCR27; V1r-like receptor 4
<b>Observed Band</b>	34kD
<b>Cell Pathway</b>	Cell membrane; Multi-pass membrane protein.
<b>Tissue Specificity</b>	
<b>Function</b>	function:Putative pheromone receptor.,miscellaneous:The chimpanzee and gorilla orthologous proteins do not exist, their genes are pseudogenes.,online information:No one nose - Issue 61 of August 2005,polymorphism:Various VN1R4 alleles are known. The sequence shown is that of allele VN1R4*1.,similarity:Belongs to the G-protein coupled receptor 1 family.,
<b>Background</b>	function:Putative pheromone receptor.,miscellaneous:The chimpanzee and gorilla orthologous proteins do not exist, their genes are pseudogenes.,online information:No one nose - Issue 61 of August 2005,polymorphism:Various VN1R4 alleles are known. The sequence shown is that of allele VN1R4*1.,similarity:Belongs to the G-protein coupled receptor 1 family.,
<b>matters needing attention</b>	Avoid repeated freezing and thawing!



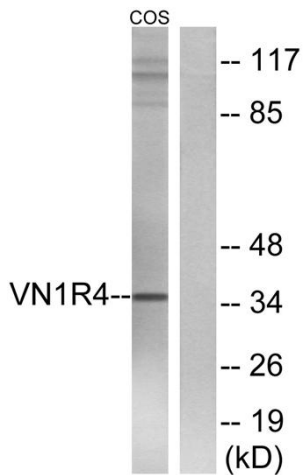
### Usage suggestions

This product can be used in immunological reaction related experiments. For more information, please consult technical personnel.

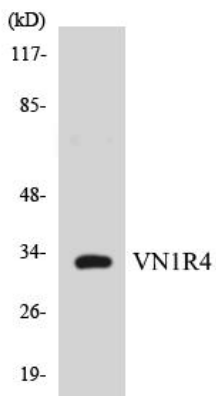
## Products Images



Immunofluorescence analysis of MCF7 cells, using VN1R4 Antibody. The picture on the right is blocked with the synthesized peptide.



Western blot analysis of lysates from COS7 cells, using VN1R4 Antibody. The lane on the right is blocked with the synthesized peptide.



Western blot analysis of the lysates from COLO205 cells using VN1R4 antibody.