



# CCK-4 Monoclonal Antibody

<b>Catalog No</b>	YP-Ab-12898
<b>Isotype</b>	IgG
<b>Reactivity</b>	Human
<b>Applications</b>	WB;IHC;IF;ELISA
<b>Gene Name</b>	PTK7
<b>Protein Name</b>	Inactive tyrosine-protein kinase 7
<b>Immunogen</b>	Purified recombinant fragment of human CCK-4 expressed in E. Coli.
<b>Specificity</b>	CCK-4 Monoclonal Antibody detects endogenous levels of CCK-4 protein.
<b>Formulation</b>	Ascitic fluid containing 0.03% sodium azide,0.5% BSA, 50%glycerol.
<b>Source</b>	Monoclonal, Mouse
<b>Purification</b>	Affinity purification
<b>Dilution</b>	WB: 1/500 - 1/2000. IHC: 1/200 - 1/1000. ELISA: 1/10000.. IF 1:50-200
<b>Concentration</b>	1 mg/ml
<b>Purity</b>	≥90%
<b>Storage Stability</b>	-20°C/1 year
<b>Synonyms</b>	PTK7; CCK4; Inactive tyrosine-protein kinase 7; Colon carcinoma kinase 4; CCK-4; Protein-tyrosine kinase 7; Pseudo tyrosine kinase receptor 7; Tyrosine-protein kinase-like 7
<b>Observed Band</b>	
<b>Cell Pathway</b>	Membrane ; Single-pass type I membrane protein . Cell junction . Colocalizes with MMP14 at cell junctions. Also localizes at the leading edge of migrating cells.
<b>Tissue Specificity</b>	Highly expressed in lung, liver, pancreas, kidney, placenta and melanocytes. Weakly expressed in thyroid gland, ovary, brain, heart and skeletal muscle. Also expressed in erythroleukemia cells. But not expressed in colon.
<b>Function</b>	function:May function as a cell adhesion molecule that acts as a regulator of planar cell polarity. Seems to lack tyrosine-protein kinase activity.,similarity:Belongs to the protein kinase superfamily. Tyr protein kinase family. Insulin receptor subfamily.,similarity:Contains 1 protein kinase domain.,similarity:Contains 7 Ig-like C2-type (immunoglobulin-like) domains.,tissue specificity:Highly expressed in lung, liver, pancreas, kidney, placenta and melanocytes. Weakly expressed in thyroid gland, ovary, brain, heart and skeletal muscle. Also expressed in erythroleukemia cells. But not expressed in colon.,
<b>Background</b>	This gene encodes a member of the receptor protein tyrosine kinase family of proteins that transduce extracellular signals across the cell membrane. The encoded protein lacks detectable catalytic tyrosine kinase activity, is involved in



the Wnt signaling pathway and plays a role in multiple cellular processes including polarity and adhesion. Alternatively spliced transcript variants encoding multiple isoforms have been observed for this gene. [provided by RefSeq, Jul 2012],

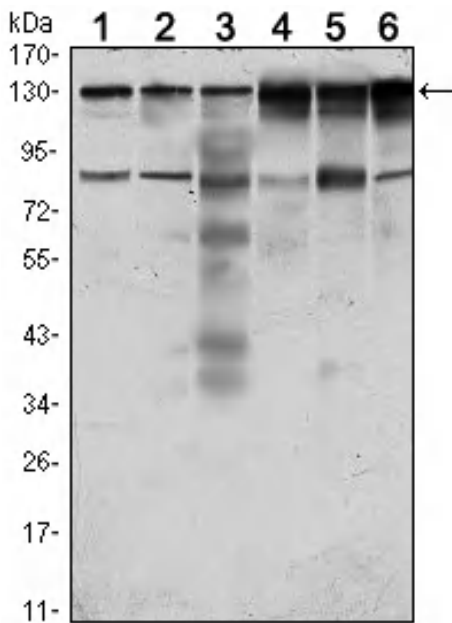
**matters needing attention**

Avoid repeated freezing and thawing!

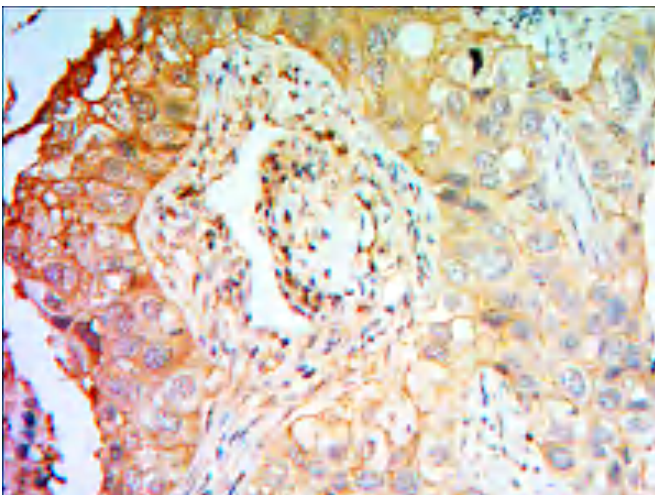
**Usage suggestions**

This product can be used in immunological reaction related experiments. For more information, please consult technical personnel.

**Products Images**



Western Blot analysis using CCK-4 Monoclonal Antibody against HeLa (1), A431 (2), HCT116 (3), Caco2 (4), HepG2 (5) and MCF-7 (6) cell lysate.



Immunohistochemistry analysis of paraffin-embedded lung cancer tissues with DAB staining using CCK-4 Monoclonal Antibody.