



# CysLTR2 Polyclonal Antibody

<b>Catalog No</b>	YP-Ab-13192
<b>Isotype</b>	IgG
<b>Reactivity</b>	Human;Rat;Mouse;
<b>Applications</b>	WB;IF;ELISA
<b>Gene Name</b>	CYSLTR2
<b>Protein Name</b>	Cysteinyl leukotriene receptor 2
<b>Immunogen</b>	The antiserum was produced against synthesized peptide derived from human CYSLTR2. AA range:281-330
<b>Specificity</b>	CysLTR2 Polyclonal Antibody detects endogenous levels of CysLTR2 protein.
<b>Formulation</b>	Liquid in PBS containing 50% glycerol, 0.5% BSA and 0.02% sodium azide.
<b>Source</b>	Polyclonal, Rabbit,IgG
<b>Purification</b>	The antibody was affinity-purified from rabbit antiserum by affinity-chromatography using epitope-specific immunogen.
<b>Dilution</b>	Western Blot: 1/500 - 1/2000. Immunofluorescence: 1/200 - 1/1000. ELISA: 1/20000. Not yet tested in other applications.
<b>Concentration</b>	1 mg/ml
<b>Purity</b>	≥90%
<b>Storage Stability</b>	-20°C/1 year
<b>Synonyms</b>	CYSLTR2; CYSLT2; CYSLT2R; PSEC0146; Cysteinyl leukotriene receptor 2; CysLTR2; G-protein coupled receptor GPCR21; hGPCR21; G-protein coupled receptor HG57; HPN321
<b>Observed Band</b>	40kD
<b>Cell Pathway</b>	Cell membrane; Multi-pass membrane protein.
<b>Tissue Specificity</b>	Widely expressed, with highest levels in the heart, placenta, spleen, peripheral blood leukocytes and adrenal gland. In lung, expressed in the interstitial macrophages, and slightly in smooth muscle cells.
<b>Function</b>	function:Receptor for cysteinyl leukotrienes. The response is mediated via a G-protein that activates a phosphatidylinositol-calcium second messenger system. Stimulation by BAY u9773, a partial agonist, induces specific contractions of pulmonary veins and might also have an indirect role in the relaxation of the pulmonary vascular endothelium. The rank order of affinities for the leukotrienes is LTC4 = LTD4 >> LTE4.,similarity:Belongs to the G-protein coupled receptor 1 family.,tissue specificity:Widely expressed, with highest levels in the heart, placenta, spleen, peripheral blood leukocytes and adrenal gland. In lung, expressed in the interstitial macrophages, and slightly in smooth muscle cells.,

**Background**

The cysteinyl leukotrienes LTC<sub>4</sub>, LTD<sub>4</sub>, and LTE<sub>4</sub> are important mediators of human bronchial asthma. Pharmacologic studies have determined that cysteinyl leukotrienes activate at least 2 receptors, the protein encoded by this gene and CYSLTR1. This encoded receptor is a member of the superfamily of G protein-coupled receptors. It seems to play a major role in endocrine and cardiovascular systems. [provided by RefSeq, Jul 2008],

**matters needing attention**

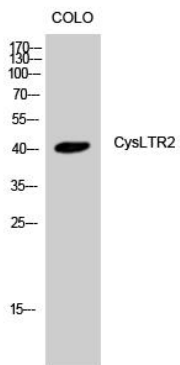
Avoid repeated freezing and thawing!

**Usage suggestions**

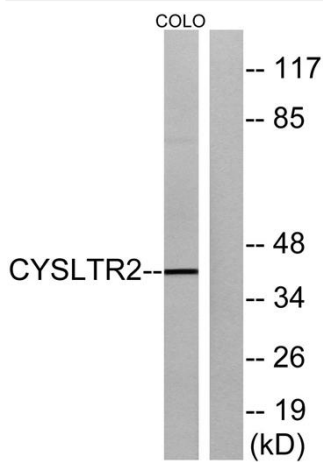
This product can be used in immunological reaction related experiments. For more information, please consult technical personnel.



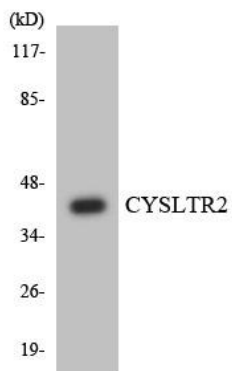
## Products Images



Western Blot analysis of COLO cells using CysLTR2 Polyclonal Antibody



Western blot analysis of lysates from COLO cells, using CYSLTR2 Antibody. The lane on the right is blocked with the synthesized peptide.



Western blot analysis of the lysates from HT-29 cells using CYSLTR2 antibody.