



EDG-7 Polyclonal Antibody

Catalog No	YP-Ab-13208
Isotype	IgG
Reactivity	Human;Rat;Mouse;
Applications	WB;IHC;IF;ELISA
Gene Name	LPAR3
Protein Name	Lysophosphatidic acid receptor 3
Immunogen	The antiserum was produced against synthesized peptide derived from human EDG7. AA range:281-330
Specificity	EDG-7 Polyclonal Antibody detects endogenous levels of EDG-7 protein.
Formulation	Liquid in PBS containing 50% glycerol, 0.5% BSA and 0.02% sodium azide.
Source	Polyclonal, Rabbit,IgG
Purification	The antibody was affinity-purified from rabbit antiserum by affinity-chromatography using epitope-specific immunogen.
Dilution	Western Blot: 1/500 - 1/2000. Immunohistochemistry: 1/100 - 1/300. Immunofluorescence: 1/200 - 1/1000. ELISA: 1/40000. Not yet tested in other applications.
Concentration	1 mg/ml
Purity	≥90%
Storage Stability	-20°C/1 year
Synonyms	LPAR3; EDG7; LPA3; Lysophosphatidic acid receptor 3; LPA receptor 3; LPA-3; Lysophosphatidic acid receptor Edg-7
Observed Band	47kD
Cell Pathway	Cell membrane; Multi-pass membrane protein.
Tissue Specificity	Most abundantly expressed in prostate, testes, pancreas, and heart, with moderate levels in lung and ovary. No detectable expression in brain, placenta, liver, skeletal muscle, kidney, spleen, thymus, small intestine, colon, or peripheral blood leukocytes.
Function	function:Receptor for lysophosphatidic acid (LPA), a mediator of diverse cellular activities. May play a role in the development of ovarian cancer. Seems to be coupled to the G(i)/G(o) and G(q) families of heteromeric G proteins.,similarity:Belongs to the G-protein coupled receptor 1 family.,tissue specificity:Most abundantly expressed in prostate, testes, pancreas, and heart, with moderate levels in lung and ovary. No detectable expression in brain, placenta, liver, skeletal muscle, kidney, spleen, thymus, small intestine, colon, or peripheral blood leukocytes.,
Background	lysophosphatidic acid receptor 3(LPAR3) Homo sapiens This gene encodes a member of the G protein-coupled receptor family, as well as the EDG family of



proteins. This protein functions as a cellular receptor for lysophosphatidic acid and mediates lysophosphatidic acid-evoked calcium mobilization. This receptor couples predominantly to G(q/11) alpha proteins. [provided by RefSeq, Jul 2008],

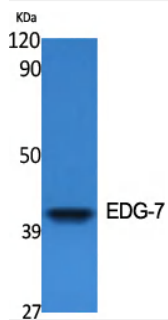
matters needing attention

Avoid repeated freezing and thawing!

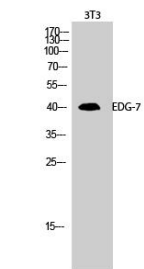
Usage suggestions

This product can be used in immunological reaction related experiments. For more information, please consult technical personnel.

Products Images



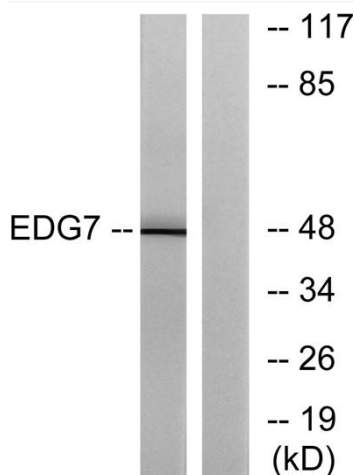
Western Blot analysis of various cells using EDG-7 Polyclonal Antibody



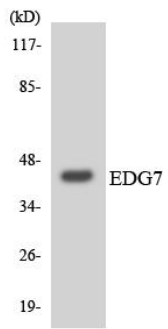
Western Blot analysis of 3T3 cells using EDG-7 Polyclonal Antibody



Immunofluorescence analysis of A549 cells, using EDG7 Antibody. The picture on the right is blocked with the synthesized peptide.



Western blot analysis of lysates from Jurkat cells, using EDG7 Antibody. The lane on the right is blocked with the synthesized peptide.



Western blot analysis of the lysates from 293 cells using EDG7 antibody.