

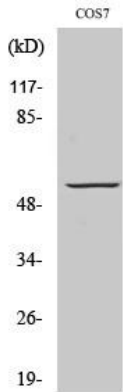


GPR101 Polyclonal Antibody

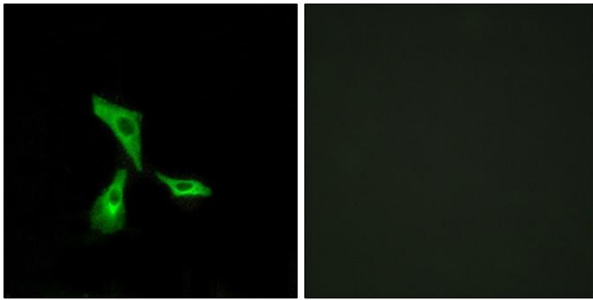
Catalog No	YP-Ab-13280
Isotype	IgG
Reactivity	Human;Mouse;Monkey
Applications	WB;IF;ELISA
Gene Name	GPR101
Protein Name	Probable G-protein coupled receptor 101
Immunogen	The antiserum was produced against synthesized peptide derived from human GPR101. AA range:451-500
Specificity	GPR101 Polyclonal Antibody detects endogenous levels of GPR101 protein.
Formulation	Liquid in PBS containing 50% glycerol, 0.5% BSA and 0.02% sodium azide.
Source	Polyclonal, Rabbit,IgG
Purification	The antibody was affinity-purified from rabbit antiserum by affinity-chromatography using epitope-specific immunogen.
Dilution	Western Blot: 1/500 - 1/2000. Immunofluorescence: 1/200 - 1/1000. ELISA: 1/5000. Not yet tested in other applications.
Concentration	1 mg/ml
Purity	≥90%
Storage Stability	-20°C/1 year
Synonyms	GPR101; Probable G-protein coupled receptor 101
Observed Band	60kD
Cell Pathway	Cell membrane; Multi-pass membrane protein.
Tissue Specificity	
Function	function:Orphan receptor.,similarity:Belongs to the G-protein coupled receptor 1 family.,
Background	The protein encoded by this gene is an orphan G protein-coupled receptor of unknown function. The encoded protein is a member of a family of proteins that contain seven transmembrane domains and transduce extracellular signals through heterotrimeric G proteins. [provided by RefSeq, Sep 2011],
matters needing attention	Avoid repeated freezing and thawing!
Usage suggestions	This product can be used in immunological reaction related experiments. For more information, please consult technical personnel.



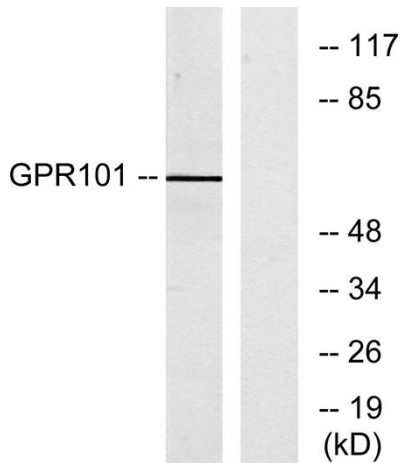
Products Images



Western Blot analysis of various cells using GPR101 Polyclonal Antibody diluted at 1:500



Immunofluorescence analysis of HeLa cells, using GPR101 Antibody. The picture on the right is blocked with the synthesized peptide.



Western blot analysis of lysates from COS7 cells, using GPR101 Antibody. The lane on the right is blocked with the synthesized peptide.