

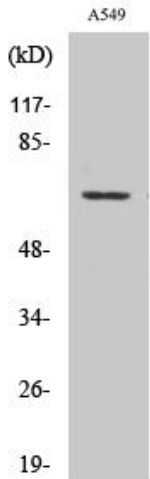


# GPR108 Polyclonal Antibody

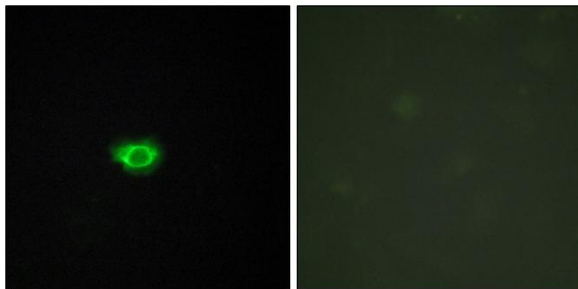
|                                  |   |
|----------------------------------|---|
| <b>Catalog No</b>                | YP-Ab-13284   |
| <b>Isotype</b>                   | IgG   |
| <b>Reactivity</b>                | Human;Rat;Mouse;  |
| <b>Applications</b>              | WB;IF;ELISA   |
| <b>Gene Name</b>                 | GPR108  |
| <b>Protein Name</b>              | Protein GPR108  |
| <b>Immunogen</b>                 | The antiserum was produced against synthesized peptide derived from human GPR108. AA range:155-204  |
| <b>Specificity</b>               | GPR108 Polyclonal Antibody detects endogenous levels of GPR108 protein.   |
| <b>Formulation</b>               | Liquid in PBS containing 50% glycerol, 0.5% BSA and 0.02% sodium azide.   |
| <b>Source</b>                    | Polyclonal, Rabbit,IgG  |
| <b>Purification</b>              | The antibody was affinity-purified from rabbit antiserum by affinity-chromatography using epitope-specific immunogen.   |
| <b>Dilution</b>                  | Western Blot: 1/500 - 1/2000. Immunofluorescence: 1/200 - 1/1000. ELISA: 1/5000. Not yet tested in other applications.  |
| <b>Concentration</b>             | 1 mg/ml   |
| <b>Purity</b>                    | ≥90%  |
| <b>Storage Stability</b>         | -20°C/1 year  |
| <b>Synonyms</b>                  | GPR108; LUSTR2; Protein GPR108; Lung seven transmembrane receptor 2   |
| <b>Observed Band</b>             | 60kD  |
| <b>Cell Pathway</b>              | Golgi apparatus, cis-Golgi network membrane ; Multi-pass membrane protein . Golgi apparatus, trans-Golgi network membrane ; Multi-pass membrane protein . Golgi apparatus membrane ; Multi-pass membrane protein . Colocalizes with TLR3, -7, -4, and -9. . |
| <b>Tissue Specificity</b>        | Uterus,   |
| <b>Function</b>                  | similarity:Belongs to the LU7TM family.,  |
| <b>Background</b>                | similarity:Belongs to the LU7TM family.,  |
| <b>matters needing attention</b> | Avoid repeated freezing and thawing!  |
| <b>Usage suggestions</b>         | This product can be used in immunological reaction related experiments. For more information, please consult technical personnel.   |



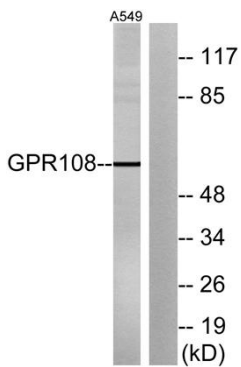
## Products Images



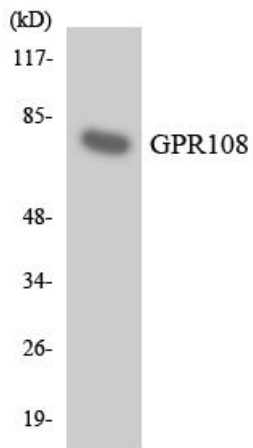
Western Blot analysis of various cells using GPR108 Polyclonal Antibody



Immunofluorescence analysis of HUVEC cells, using GPR108 Antibody. The picture on the right is blocked with the synthesized peptide.



Western blot analysis of lysates from A549 cells, using GPR108 Antibody. The lane on the right is blocked with the synthesized peptide.



Western blot analysis of the lysates from HT-29 cells using GPR108 antibody.