

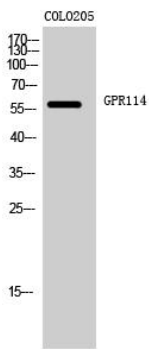


GPR114 Polyclonal Antibody

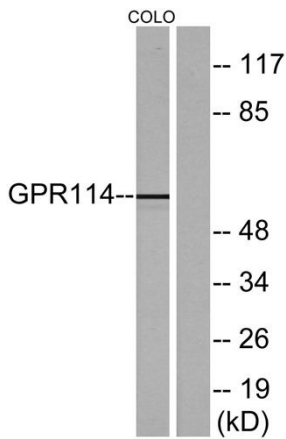
| | |
|----------------------------------|---|
| Catalog No | YP-Ab-13287 |
| Isotype | IgG |
| Reactivity | Human;Rat;Mouse; |
| Applications | WB;IF;ELISA |
| Gene Name | GPR114 |
| Protein Name | Probable G-protein coupled receptor 114 |
| Immunogen | The antiserum was produced against synthesized peptide derived from human GPR114. AA range:91-140 |
| Specificity | GPR114 Polyclonal Antibody detects endogenous levels of GPR114 protein. |
| Formulation | Liquid in PBS containing 50% glycerol, 0.5% BSA and 0.02% sodium azide. |
| Source | Polyclonal, Rabbit,IgG |
| Purification | The antibody was affinity-purified from rabbit antiserum by affinity-chromatography using epitope-specific immunogen. |
| Dilution | Western Blot: 1/500 - 1/2000. Immunofluorescence: 1/200 - 1/1000. ELISA: 1/5000. Not yet tested in other applications. |
| Concentration | 1 mg/ml |
| Purity | ≥90% |
| Storage Stability | -20°C/1 year |
| Synonyms | GPR114; PGR27; Probable G-protein coupled receptor 114; G-protein coupled receptor PGR27 |
| Observed Band | 59kD |
| Cell Pathway | Cell membrane ; Multi-pass membrane protein . |
| Tissue Specificity | Expressed in immune cells. Primarily found in granulocytes. Found in eosinophils. |
| Function | function:Orphan receptor.,similarity:Belongs to the G-protein coupled receptor 2 family. LN-TM7 subfamily.,similarity:Contains 1 GPS domain., |
| Background | This gene encodes a member of the adhesion family of G-protein coupled receptors. Members of this family are characterized by long N-termini and multiple functional domains. They may play a role in the immune system as well as in the central nervous system. Alternative splicing results in multiple transcript variants. [provided by RefSeq, Jan 2016], |
| matters needing attention | Avoid repeated freezing and thawing! |
| Usage suggestions | This product can be used in immunological reaction related experiments. For more information, please consult technical personnel. |



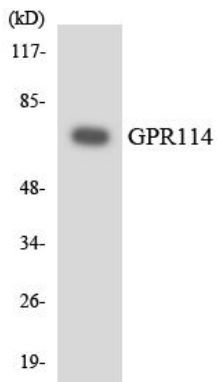
Products Images



Western Blot analysis of COLO205 cells using GPR114 Polyclonal Antibody



Western blot analysis of lysates from COLO205 cells, using GPR114 Antibody. The lane on the right is blocked with the synthesized peptide.



Western blot analysis of the lysates from 293 cells using GPR114 antibody.