

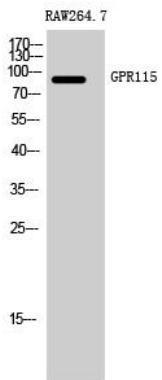


GPR115 Polyclonal Antibody

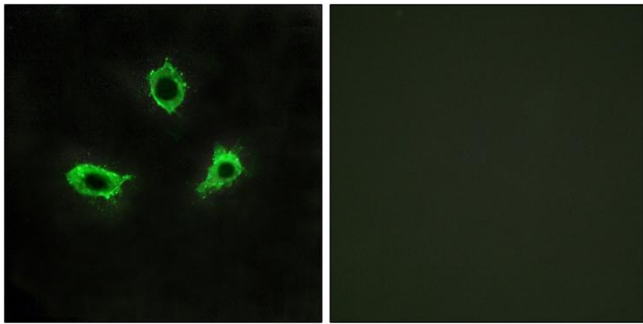
Catalog No	YP-Ab-13288
Isotype	IgG
Reactivity	Human;Mouse
Applications	WB;IF;ELISA
Gene Name	GPR115
Protein Name	Probable G-protein coupled receptor 115
Immunogen	The antiserum was produced against synthesized peptide derived from human GPR115. AA range:641-690
Specificity	GPR115 Polyclonal Antibody detects endogenous levels of GPR115 protein.
Formulation	Liquid in PBS containing 50% glycerol, 0.5% BSA and 0.02% sodium azide.
Source	Polyclonal, Rabbit,IgG
Purification	The antibody was affinity-purified from rabbit antiserum by affinity-chromatography using epitope-specific immunogen.
Dilution	Western Blot: 1/500 - 1/2000. Immunofluorescence: 1/200 - 1/1000. ELISA: 1/10000. Not yet tested in other applications.
Concentration	1 mg/ml
Purity	≥90%
Storage Stability	-20°C/1 year
Synonyms	GPR115; PGR18; Probable G-protein coupled receptor 115; G-protein coupled receptor PGR18
Observed Band	82kD
Cell Pathway	Membrane ; Multi-pass membrane protein .
Tissue Specificity	Testis,
Function	function:Orphan receptor.,similarity:Belongs to the G-protein coupled receptor 2 family. LN-TM7 subfamily.,similarity:Contains 1 GPS domain.,
Background	function:Orphan receptor.,similarity:Belongs to the G-protein coupled receptor 2 family. LN-TM7 subfamily.,similarity:Contains 1 GPS domain.,
matters needing attention	Avoid repeated freezing and thawing!
Usage suggestions	This product can be used in immunological reaction related experiments. For more information, please consult technical personnel.



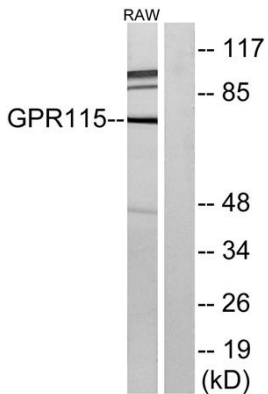
Products Images



Western Blot analysis of RAW264.7 cells using GPR115 Polyclonal Antibody



Immunofluorescence analysis of LOVO cells, using GPR115 Antibody. The picture on the right is blocked with the synthesized peptide.



Western blot analysis of lysates from RAW264.7 cells, using GPR115 Antibody. The lane on the right is blocked with the synthesized peptide.