

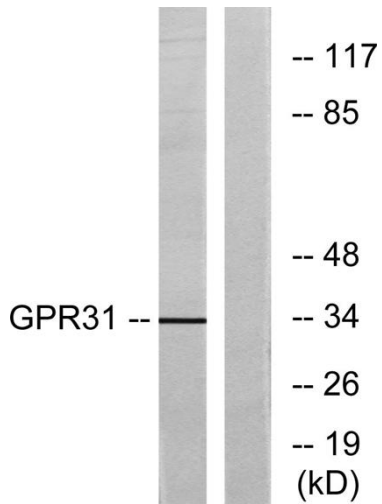


GPR31 Polyclonal Antibody

| | |
|----------------------------------|---|
| Catalog No | YP-Ab-13330 |
| Isotype | IgG |
| Reactivity | Human;Rat;Mouse; |
| Applications | WB;ELISA |
| Gene Name | GPR31 |
| Protein Name | 12-(S)-hydroxy-5,8,10,14-eicosatetraenoic acid receptor |
| Immunogen | The antiserum was produced against synthesized peptide derived from human GPR31. AA range:181-230 |
| Specificity | GPR31 Polyclonal Antibody detects endogenous levels of GPR31 protein. |
| Formulation | Liquid in PBS containing 50% glycerol, 0.5% BSA and 0.02% sodium azide. |
| Source | Polyclonal, Rabbit,IgG |
| Purification | The antibody was affinity-purified from rabbit antiserum by affinity-chromatography using epitope-specific immunogen. |
| Dilution | Western Blot: 1/500 - 1/2000. ELISA: 1/5000. Not yet tested in other applications. |
| Concentration | 1 mg/ml |
| Purity | ≥90% |
| Storage Stability | -20°C/1 year |
| Synonyms | GPR31; 12-(S)-hydroxy-5; 8,10,14-eicosatetraenoic acid receptor; 12-(S)-HETE receptor; 12-HETER; G-protein coupled receptor 31 |
| Observed Band | 33kD |
| Cell Pathway | Cell membrane ; Multi-pass membrane protein . |
| Tissue Specificity | G-protein coupled receptors,Placenta, |
| Function | function:Orphan receptor.,similarity:Belongs to the G-protein coupled receptor 1 family., |
| Background | function:Orphan receptor.,similarity:Belongs to the G-protein coupled receptor 1 family., |
| matters needing attention | Avoid repeated freezing and thawing! |
| Usage suggestions | This product can be used in immunological reaction related experiments. For more information, please consult technical personnel. |



Products Images



Western blot analysis of lysates from COLO cells, using GPR31 Antibody. The lane on the right is blocked with the synthesized peptide.