

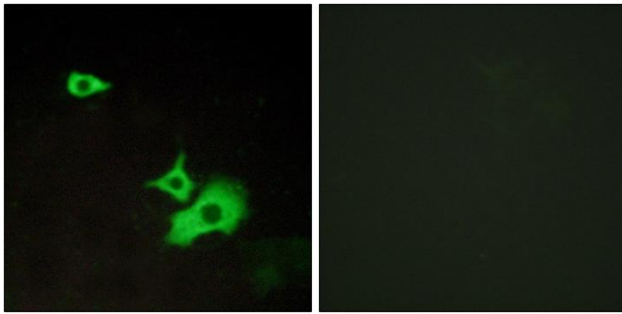


GPR37L1 Polyclonal Antibody

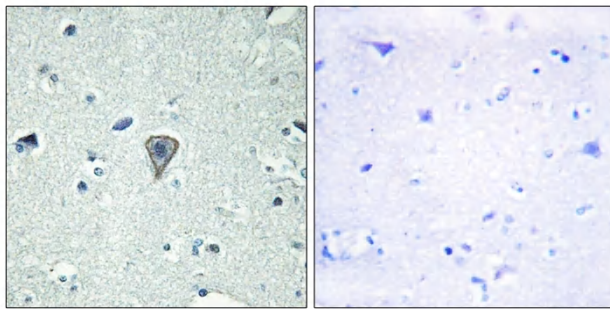
Catalog No	YP-Ab-13335
Isotype	IgG
Reactivity	Human;Rat;Mouse;
Applications	WB;IHC;IF;ELISA
Gene Name	GPR37L1
Protein Name	Endothelin B receptor-like protein 2
Immunogen	The antiserum was produced against synthesized peptide derived from human ETBR2. AA range:1-50
Specificity	GPR37L1 Polyclonal Antibody detects endogenous levels of GPR37L1 protein.
Formulation	Liquid in PBS containing 50% glycerol, 0.5% BSA and 0.02% sodium azide.
Source	Polyclonal, Rabbit,IgG
Purification	The antibody was affinity-purified from rabbit antiserum by affinity-chromatography using epitope-specific immunogen.
Dilution	Western Blot: 1/500 - 1/2000. Immunohistochemistry: 1/100 - 1/300. Immunofluorescence: 1/200 - 1/1000. ELISA: 1/10000. Not yet tested in other applications.
Concentration	1 mg/ml
Purity	≥90%
Storage Stability	-20°C/1 year
Synonyms	GPR37L1; ETBRLP2; Endothelin B receptor-like protein 2; ETBR-LP-2; G-protein coupled receptor 37-like 1
Observed Band	52kD
Cell Pathway	Cell membrane ; Multi-pass membrane protein . Cell projection, cilium membrane ; Multi-pass membrane protein . Associates with the basal membrane of Bergmann glia cell primary cilia. .
Tissue Specificity	Expressed in primary cortical astrocytes (at protein level) (PubMed:23690594). Expressed in the central nervous system (PubMed:9539149).
Function	function:Orphan receptor.,similarity:Belongs to the G-protein coupled receptor 1 family.,tissue specificity:Expressed in the central nervous system.,
Background	function:Orphan receptor.,similarity:Belongs to the G-protein coupled receptor 1 family.,tissue specificity:Expressed in the central nervous system.,
matters needing attention	Avoid repeated freezing and thawing!
Usage suggestions	This product can be used in immunological reaction related experiments. For more information, please consult technical personnel.



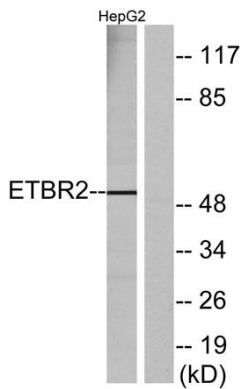
Products Images



Immunofluorescence analysis of LOVO cells, using ETBR2 Antibody. The picture on the right is blocked with the synthesized peptide.



Immunohistochemistry analysis of paraffin-embedded human brain tissue, using ETBR2 Antibody. The picture on the right is blocked with the synthesized peptide.



Western blot analysis of lysates from HepG2 cells, using ETBR2 Antibody. The lane on the right is blocked with the synthesized peptide.