

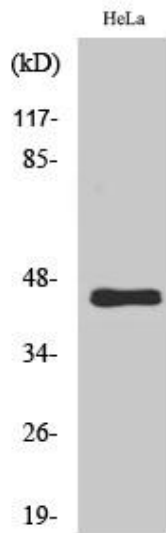


# GPR38 Polyclonal Antibody

<b>Catalog No</b>	YP-Ab-13336
<b>Isotype</b>	IgG
<b>Reactivity</b>	Human;Rat;Mouse;
<b>Applications</b>	WB;ELISA
<b>Gene Name</b>	MLNR
<b>Protein Name</b>	Motilin receptor
<b>Immunogen</b>	Synthesized peptide derived from the C-terminal region of human GPR38.
<b>Specificity</b>	GPR38 Polyclonal Antibody detects endogenous levels of GPR38 protein.
<b>Formulation</b>	Liquid in PBS containing 50% glycerol, 0.5% BSA and 0.02% sodium azide.
<b>Source</b>	Polyclonal, Rabbit,IgG
<b>Purification</b>	The antibody was affinity-purified from rabbit antiserum by affinity-chromatography using epitope-specific immunogen.
<b>Dilution</b>	Western Blot: 1/500 - 1/2000. ELISA: 1/20000. Not yet tested in other applications.
<b>Concentration</b>	1 mg/ml
<b>Purity</b>	≥90%
<b>Storage Stability</b>	-20°C/1 year
<b>Synonyms</b>	MLNR; GPR38; MTLR; MTLR1; Motilin receptor; G-protein coupled receptor 38
<b>Observed Band</b>	45kD
<b>Cell Pathway</b>	Cell membrane; Multi-pass membrane protein.
<b>Tissue Specificity</b>	Expressed only in thyroid, stomach, and bone marrow.
<b>Function</b>	function:Receptor for motilin.,similarity:Belongs to the G-protein coupled receptor 1 family.,tissue specificity:Expressed only in thyroid, stomach, and bone marrow.,
<b>Background</b>	Motilin is a 22 amino acid peptide hormone expressed throughout the gastrointestinal (GI) tract. The protein encoded by this gene is a motilin receptor which is a member of the G-protein coupled receptor 1 family. This member is a multi-pass transmembrane protein, and is an important therapeutic target for the treatment of hypomotility disorders. [provided by RefSeq, Aug 2011],
<b>matters needing attention</b>	Avoid repeated freezing and thawing!
<b>Usage suggestions</b>	This product can be used in immunological reaction related experiments. For more information, please consult technical personnel.



## Products Images



Western Blot analysis of various cells using GPR38 Polyclonal Antibody