



# GPR40 Polyclonal Antibody

<b>Catalog No</b>	YP-Ab-13337
<b>Isotype</b>	IgG
<b>Reactivity</b>	Human;Monkey
<b>Applications</b>	WB;IF;ELISA
<b>Gene Name</b>	FFAR1
<b>Protein Name</b>	Free fatty acid receptor 1
<b>Immunogen</b>	The antiserum was produced against synthesized peptide derived from human FFAR1. AA range:185-234
<b>Specificity</b>	GPR40 Polyclonal Antibody detects endogenous levels of GPR40 protein.
<b>Formulation</b>	Liquid in PBS containing 50% glycerol, 0.5% BSA and 0.02% sodium azide.
<b>Source</b>	Polyclonal, Rabbit,IgG
<b>Purification</b>	The antibody was affinity-purified from rabbit antiserum by affinity-chromatography using epitope-specific immunogen.
<b>Dilution</b>	Western Blot: 1/500 - 1/2000. Immunofluorescence: 1/200 - 1/1000. ELISA: 1/10000. Not yet tested in other applications.
<b>Concentration</b>	1 mg/ml
<b>Purity</b>	≥90%
<b>Storage Stability</b>	-20°C/1 year
<b>Synonyms</b>	FFAR1; GPR40; Free fatty acid receptor 1; G-protein coupled receptor 40
<b>Observed Band</b>	26kD
<b>Cell Pathway</b>	Cell membrane ; Multi-pass membrane protein .
<b>Tissue Specificity</b>	Detected in brain and pancreas. Detected in pancreatic beta cells.
<b>Function</b>	function:Receptor for medium and long chain saturated and unsaturated fatty acids. Binding of the ligand increase intracellular calcium concentration and amplify glucose-stimulated insulin secretion. The activity of this receptor is mediated by G-proteins that activate phospholipase C. Seems to act through a G(q) and G(i)-mediated pathway.,similarity:Belongs to the G-protein coupled receptor 1 family.,tissue specificity:Expressed abundantly in pancreatic beta cells.,
<b>Background</b>	This gene encodes a member of the GP40 family of G protein-coupled receptors that are clustered together on chromosome 19. The encoded protein is a receptor for medium and long chain free fatty acids and may be involved in the metabolic regulation of insulin secretion. Polymorphisms in this gene may be associated with type 2 diabetes. [provided by RefSeq, Apr 2009],



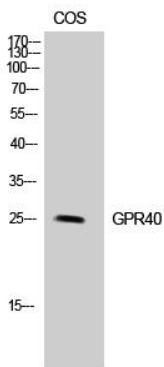
**matters needing attention**

Avoid repeated freezing and thawing!

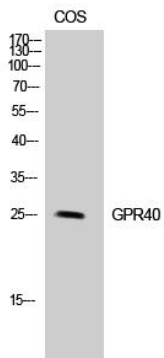
**Usage suggestions**

This product can be used in immunological reaction related experiments. For more information, please consult technical personnel.

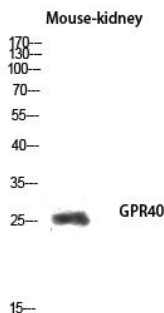
**Products Images**



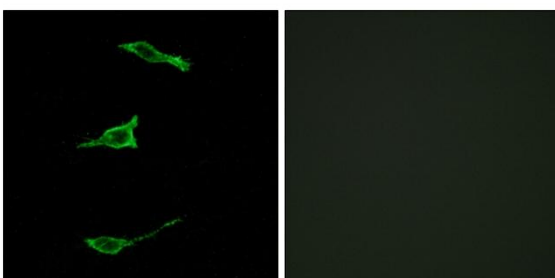
Western Blot analysis of COS7 cells using GPR40 Polyclonal Antibody diluted at 1:500



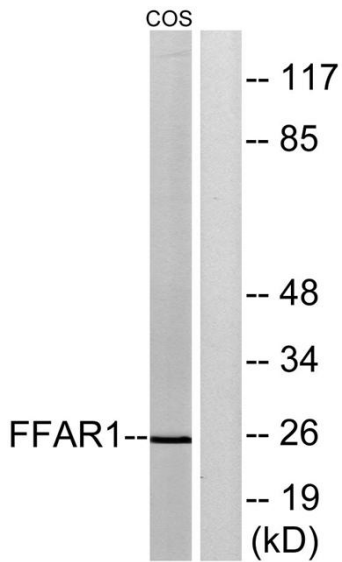
Western Blot analysis of COS-7 cells using GPR40 Polyclonal Antibody diluted at 1:500



Western blot analysis of Mouse-kidney lysis using GPR40 antibody. Antibody was diluted at 1:500



Immunofluorescence analysis of LOVO cells, using FFAR1 Antibody. The picture on the right is blocked with the synthesized peptide.



Western blot analysis of lysates from COS7 cells, treated with forskolin 40nM 30', using FFAR1 Antibody. The lane on the right is blocked with the synthesized peptide.