

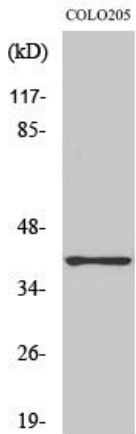


# GPR52 Polyclonal Antibody

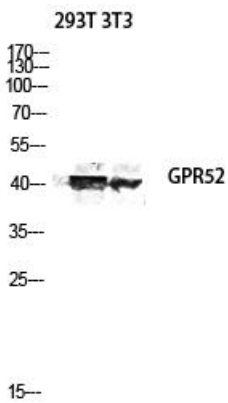
<b>Catalog No</b>	YP-Ab-13343
<b>Isotype</b>	IgG
<b>Reactivity</b>	Human;Rat;Mouse;
<b>Applications</b>	WB;ELISA
<b>Gene Name</b>	GPR52
<b>Protein Name</b>	Probable G-protein coupled receptor 52
<b>Immunogen</b>	The antiserum was produced against synthesized peptide derived from human GPR52. AA range:311-360
<b>Specificity</b>	GPR52 Polyclonal Antibody detects endogenous levels of GPR52 protein.
<b>Formulation</b>	Liquid in PBS containing 50% glycerol, 0.5% BSA and 0.02% sodium azide.
<b>Source</b>	Polyclonal, Rabbit,IgG
<b>Purification</b>	The antibody was affinity-purified from rabbit antiserum by affinity-chromatography using epitope-specific immunogen.
<b>Dilution</b>	Western Blot: 1/500 - 1/2000. ELISA: 1/10000. Not yet tested in other applications.
<b>Concentration</b>	1 mg/ml
<b>Purity</b>	≥90%
<b>Storage Stability</b>	-20°C/1 year
<b>Synonyms</b>	GPR52; Probable G-protein coupled receptor 52
<b>Observed Band</b>	41kD
<b>Cell Pathway</b>	Cell membrane; Multi-pass membrane protein.
<b>Tissue Specificity</b>	Expressed in brain, especially in striatum.
<b>Function</b>	function:Orphan receptor.,similarity:Belongs to the G-protein coupled receptor 1 family.,
<b>Background</b>	Members of the G protein-coupled receptor (GPR) family play important roles in signal transduction from the external environment to the inside of the cell.[supplied by OMIM, Jul 2002],
<b>matters needing attention</b>	Avoid repeated freezing and thawing!
<b>Usage suggestions</b>	This product can be used in immunological reaction related experiments. For more information, please consult technical personnel.



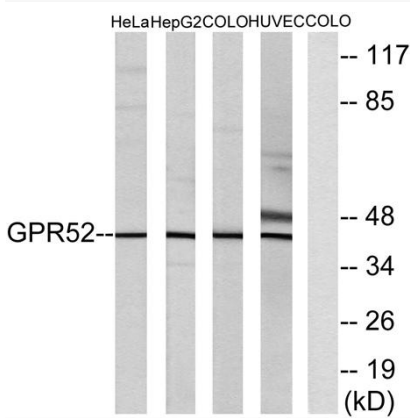
## Products Images



Western Blot analysis of various cells using GPR52 Polyclonal Antibody diluted at 1:2000



Western blot analysis of 293T 3T3 lysis using GPR52 antibody. Antibody was diluted at 1:2000



Western blot analysis of lysates from COLO, HUVEC, HeLa, and HepG2 cells, using GPR52 Antibody. The lane on the right is blocked with the synthesized peptide.