

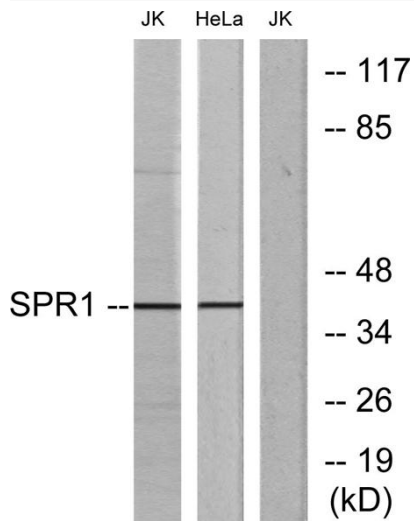


# GPR68 Polyclonal Antibody

<b>Catalog No</b>	YP-Ab-13347
<b>Isotype</b>	IgG
<b>Reactivity</b>	Human;Mouse
<b>Applications</b>	WB;IF;ELISA
<b>Gene Name</b>	GPR68
<b>Protein Name</b>	Ovarian cancer G-protein coupled receptor 1
<b>Immunogen</b>	The antiserum was produced against synthesized peptide derived from human SPR1. AA range:281-330
<b>Specificity</b>	GPR68 Polyclonal Antibody detects endogenous levels of GPR68 protein.
<b>Formulation</b>	Liquid in PBS containing 50% glycerol, 0.5% BSA and 0.02% sodium azide.
<b>Source</b>	Polyclonal, Rabbit,IgG
<b>Purification</b>	The antibody was affinity-purified from rabbit antiserum by affinity-chromatography using epitope-specific immunogen.
<b>Dilution</b>	Western Blot: 1/500 - 1/2000. Immunofluorescence: 1/200 - 1/1000. ELISA: 1/5000. Not yet tested in other applications.
<b>Concentration</b>	1 mg/ml
<b>Purity</b>	≥90%
<b>Storage Stability</b>	-20°C/1 year
<b>Synonyms</b>	GPR68; OGR1; Ovarian cancer G-protein coupled receptor 1; OGR-1; G-protein coupled receptor 68; GPR12A; Sphingosylphosphorylcholine receptor
<b>Observed Band</b>	41kD
<b>Cell Pathway</b>	Cell membrane; Multi-pass membrane protein.
<b>Tissue Specificity</b>	Found at low level in a wide range of tissues, but significantly expressed in lung, kidney, bone and nervous system.
<b>Function</b>	similarity:Belongs to the G-protein coupled receptor 1 family.,
<b>Background</b>	similarity:Belongs to the G-protein coupled receptor 1 family.,
<b>matters needing attention</b>	Avoid repeated freezing and thawing!
<b>Usage suggestions</b>	This product can be used in immunological reaction related experiments. For more information, please consult technical personnel.



## Products Images



Western blot analysis of lysates from Jurkat and HeLa cells, using SPR1 Antibody. The lane on the right is blocked with the synthesized peptide.