



IL-3R β Polyclonal Antibody

Catalog No	YP-Ab-13379
Isotype	IgG
Reactivity	Human;Mouse;Rat
Applications	WB;IHC;IF;ELISA
Gene Name	CSF2RB
Protein Name	Cytokine receptor common subunit beta
Immunogen	The antiserum was produced against synthesized peptide derived from human IL-3R beta. AA range:559-608
Specificity	IL-3R β Polyclonal Antibody detects endogenous levels of IL-3R β protein.
Formulation	Liquid in PBS containing 50% glycerol, 0.5% BSA and 0.02% sodium azide.
Source	Polyclonal, Rabbit,IgG
Purification	The antibody was affinity-purified from rabbit antiserum by affinity-chromatography using epitope-specific immunogen.
Dilution	WB: 1/500 - 1/2000. IHC: 1/100 - 1/300. ELISA: 1/5000.. IF 1:50-200
Concentration	1 mg/ml
Purity	$\geq 90\%$
Storage Stability	-20°C/1 year
Synonyms	CSF2RB; IL3RB; IL5RB; Cytokine receptor common subunit beta; CDw131; GM-CSF/IL-3/IL-5 receptor common beta subunit; CD antigen CD131
Observed Band	125kD
Cell Pathway	Membrane; Single-pass type I membrane protein.
Tissue Specificity	Placenta,
Function	disease:Defects in CSF2RB are a cause of congenital pulmonary alveolar proteinosis (PAP) [MIM:265120]. PAP is an autosomal recessive fatal respiratory disease.,domain:The box 1 motif is required for JAK interaction and/or activation.,domain:The WSXWS motif appears to be necessary for proper protein folding and thereby efficient intracellular transport and cell-surface receptor binding.,function:High affinity receptor for interleukin-3, interleukin-5 and granulocyte-macrophage colony-stimulating factor.,similarity:Belongs to the type I cytokine receptor family. Type 4 subfamily.,similarity:Contains 2 fibronectin type-III domains.,subunit:Heterodimer of an alpha and a beta subunit. The beta subunit is common to the IL3, IL5 and GM-CSF receptors.,
Background	The protein encoded by this gene is the common beta chain of the high affinity receptor for IL-3, IL-5 and CSF. Defects in this gene have been reported to be associated with protein alveolar proteinosis (PAP). [provided by RefSeq, Jul 2008],



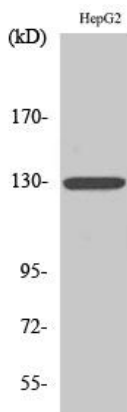
matters needing attention

Avoid repeated freezing and thawing!

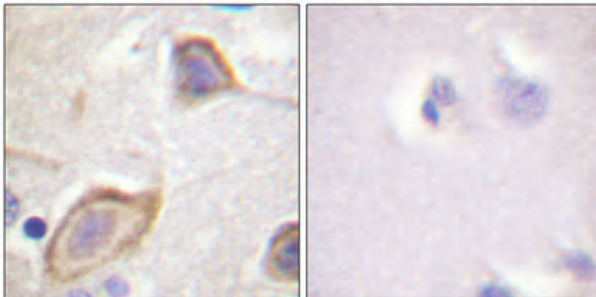
Usage suggestions

This product can be used in immunological reaction related experiments. For more information, please consult technical personnel.

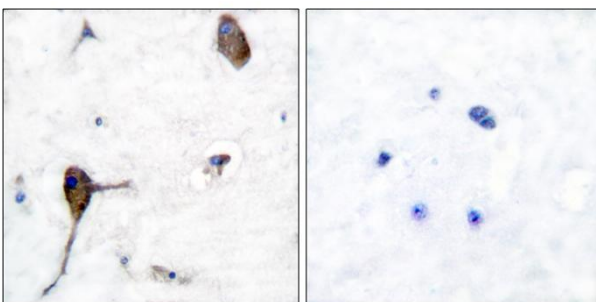
Products Images



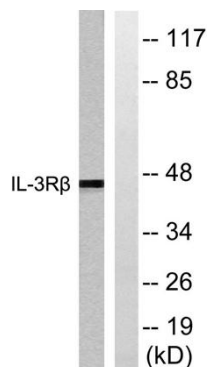
Western Blot analysis of various cells using IL-3R β Polyclonal Antibody



Immunohistochemical analysis of paraffin-embedded Human brain. Antibody was diluted at 1:100(4° overnight). High-pressure and temperature Tris-EDTA,pH8.0 was used for antigen retrieval. Negative contrl (right) obtained from antibody was pre-absorbed by immunogen peptide.



Immunohistochemistry analysis of paraffin-embedded human brain tissue, using IL-3R beta Antibody. The picture on the right is blocked with the synthesized peptide.



Western blot analysis of lysates from Raw264.7 cells, treated with G-CSF 25ng/ml 15', using IL-3R beta Antibody. The lane on the right is blocked with the synthesized peptide.