



IP Receptor Polyclonal Antibody

Catalog No	YP-Ab-13383
Isotype	IgG
Reactivity	Human;Rat;Mouse;
Applications	WB;ELISA;IHC
Gene Name	PTGIR
Protein Name	Prostacyclin receptor
Immunogen	The antiserum was produced against synthesized peptide derived from human Prostacyclin Receptor. AA range:198-247
Specificity	IP Receptor Polyclonal Antibody detects endogenous levels of IP Receptor protein.
Formulation	Liquid in PBS containing 50% glycerol, 0.5% BSA and 0.02% sodium azide.
Source	Polyclonal, Rabbit,IgG
Purification	The antibody was affinity-purified from rabbit antiserum by affinity-chromatography using epitope-specific immunogen.
Dilution	WB 1:500-2000;IHC-p 1:50-300; ELISA 2000-20000
Concentration	1 mg/ml
Purity	≥90%
Storage Stability	-20°C/1 year
Synonyms	PTGIR; PRIPR; Prostacyclin receptor; Prostaglandin I2 receptor; PGI receptor; PGI2 receptor; Prostanoid IP receptor
Observed Band	45kD
Cell Pathway	Cell membrane; Multi-pass membrane protein.
Tissue Specificity	Lung,Pancreas,Placenta,
Function	function:Receptor for prostacyclin (prostaglandin I2 or PGI2). The activity of this receptor is mediated by G(s) proteins which activate adenylate cyclase.,PTM:Isoprenylation does not influence ligand binding but is required for efficient coupling to the effectors adenylyl cyclase and phospholipase C.,PTM:Palmitoylation of either Cys-308 or Cys-311 is sufficient to maintain functional coupling to G(s) and signaling.,similarity:Belongs to the G-protein coupled receptor 1 family.,
Background	The protein encoded by this gene is a member of the G-protein coupled receptor family 1 and has been shown to be a receptor for prostacyclin. Prostacyclin, the major product of cyclooxygenase in macrovascular endothelium, elicits a potent vasodilation and inhibition of platelet aggregation through binding to this receptor. [provided by RefSeq, Jul 2008],



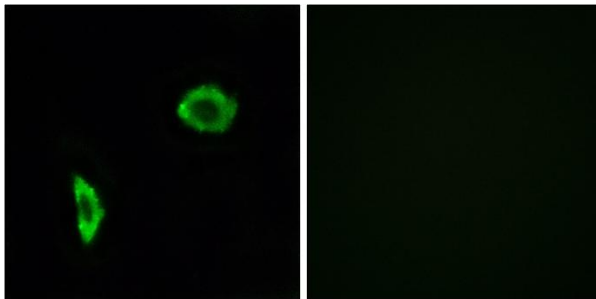
matters needing attention

Avoid repeated freezing and thawing!

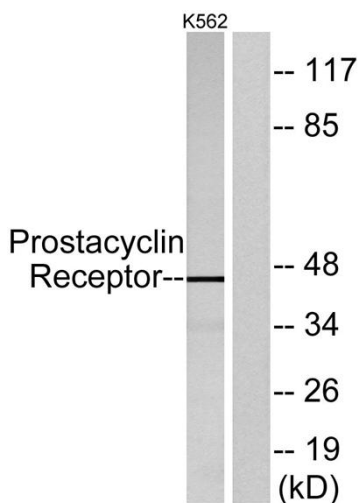
Usage suggestions

This product can be used in immunological reaction related experiments. For more information, please consult technical personnel.

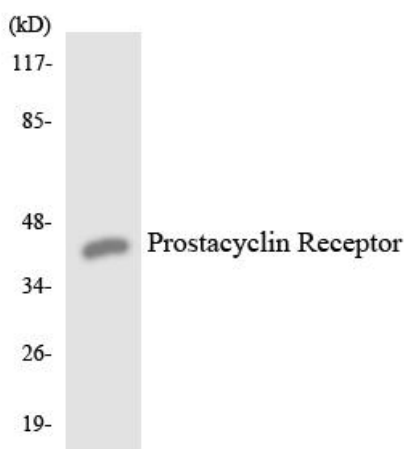
Products Images



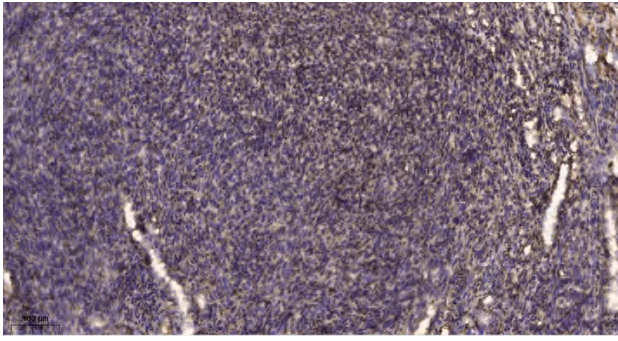
Immunofluorescence analysis of LOVO cells, using Prostacyclin Receptor Antibody. The picture on the right is blocked with the synthesized peptide.



Western blot analysis of lysates from K562 cells, using Prostacyclin Receptor Antibody. The lane on the right is blocked with the synthesized peptide.



Western blot analysis of the lysates from HUVEC cells using Prostacyclin Receptor antibody.



Immunohistochemical analysis of paraffin-embedded human uterus. 1, Antibody was diluted at 1:200(4° overnight). 2, Tris-EDTA,pH9.0 was used for antigen retrieval. 3,Secondary antibody was diluted at 1:200(room temperature, 45min).