

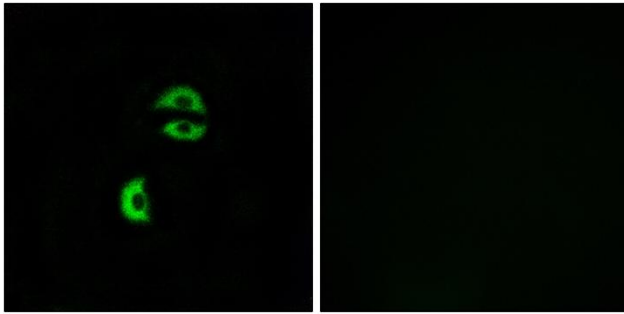


LDLRAD3 Polyclonal Antibody

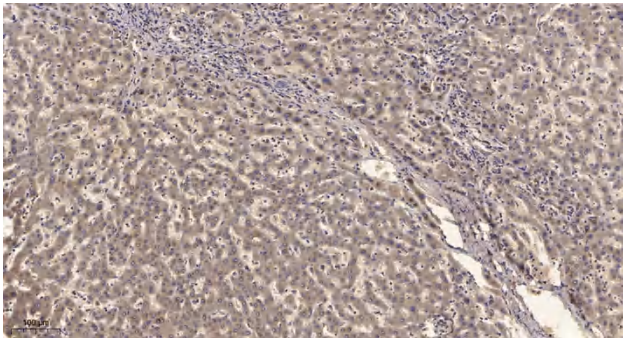
Catalog No	YP-Ab-13392
Isotype	IgG
Reactivity	Human;Mouse
Applications	WB;IHC
Gene Name	LDLRAD3
Protein Name	Low-density lipoprotein receptor class A domain-containing protein 3
Immunogen	The antiserum was produced against synthesized peptide derived from human LDLRAD3. AA range:37-86
Specificity	LDLRAD3 Polyclonal Antibody detects endogenous levels of LDLRAD3 protein.
Formulation	Liquid in PBS containing 50% glycerol, 0.5% BSA and 0.02% sodium azide.
Source	Polyclonal, Rabbit,IgG
Purification	The antibody was affinity-purified from rabbit antiserum by affinity-chromatography using epitope-specific immunogen.
Dilution	WB 1:500-2000;IHC-p 1:50-300
Concentration	1 mg/ml
Purity	≥90%
Storage Stability	-20°C/1 year
Synonyms	LDLRAD3; Low-density lipoprotein receptor class A domain-containing protein 3
Observed Band	37kD
Cell Pathway	Cell membrane ; Single-pass type I membrane protein .
Tissue Specificity	Expressed at high levels in brain, lung, skeletal muscle, and pancreas. Expressed at moderate levels in heart, placenta, and kidney but not detected in the liver.
Function	similarity:Belongs to the LDLR family.,similarity:Contains 3 LDL-receptor class A domains.,
Background	similarity:Belongs to the LDLR family.,similarity:Contains 3 LDL-receptor class A domains.,
matters needing attention	Avoid repeated freezing and thawing!
Usage suggestions	This product can be used in immunological reaction related experiments. For more information, please consult technical personnel.



Products Images



Immunofluorescence analysis of A549 cells, using LDLRAD3 Antibody. The picture on the right is blocked with the synthesized peptide.



Immunohistochemical analysis of paraffin-embedded human liver cancer. 1, Antibody was diluted at 1:200(4° overnight). 2, Tris-EDTA,pH9.0 was used for antigen retrieval. 3,Secondary antibody was diluted at 1:200(room temperature, 45min).