

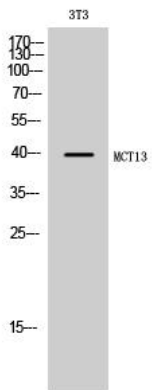


MCT13 Polyclonal Antibody

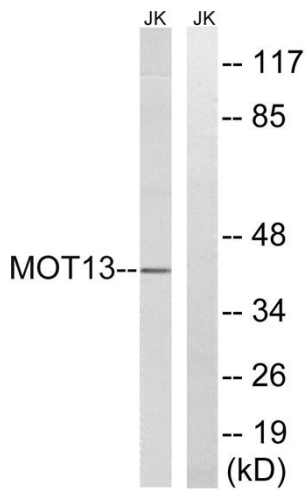
Catalog No	YP-Ab-13408
Isotype	IgG
Reactivity	Human;Rat;Mouse;
Applications	WB;ELISA
Gene Name	SLC16A13
Protein Name	Monocarboxylate transporter 13
Immunogen	The antiserum was produced against synthesized peptide derived from human MOT13. AA range:377-426
Specificity	MCT13 Polyclonal Antibody detects endogenous levels of MCT13 protein.
Formulation	Liquid in PBS containing 50% glycerol, 0.5% BSA and 0.02% sodium azide.
Source	Polyclonal, Rabbit,IgG
Purification	The antibody was affinity-purified from rabbit antiserum by affinity-chromatography using epitope-specific immunogen.
Dilution	Western Blot: 1/500 - 1/2000. ELISA: 1/5000. Not yet tested in other applications.
Concentration	1 mg/ml
Purity	≥90%
Storage Stability	-20°C/1 year
Synonyms	SLC16A13; MCT13; Monocarboxylate transporter 13; MCT 13; Solute carrier family 16 member 13
Observed Band	40kD
Cell Pathway	Golgi apparatus membrane ; Multi-pass membrane protein . Cell membrane ; Multi-pass membrane protein .
Tissue Specificity	
Function	function:Proton-linked monocarboxylate transporter. Catalyzes the rapid transport across the plasma membrane of many monocarboxylates.,similarity:Belongs to the major facilitator superfamily. Monocarboxylate porter (TC 2.A.1.13) family.,
Background	function:Proton-linked monocarboxylate transporter. Catalyzes the rapid transport across the plasma membrane of many monocarboxylates.,similarity:Belongs to the major facilitator superfamily. Monocarboxylate porter (TC 2.A.1.13) family.,
matters needing attention	Avoid repeated freezing and thawing!
Usage suggestions	This product can be used in immunological reaction related experiments. For more information, please consult technical personnel.



Products Images



Western Blot analysis of 3T3 cells using MCT13 Polyclonal Antibody



Western blot analysis of lysates from Jurkat cells, using MOT13 Antibody. The lane on the right is blocked with the synthesized peptide.