

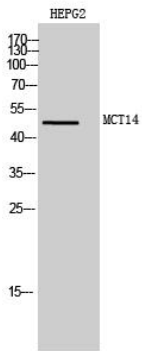


MCT14 Polyclonal Antibody

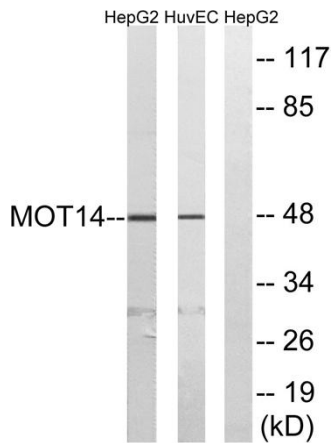
Catalog No	YP-Ab-13409
Isotype	IgG
Reactivity	Human;Mouse
Applications	WB;ELISA
Gene Name	SLC16A14
Protein Name	Monocarboxylate transporter 14
Immunogen	The antiserum was produced against synthesized peptide derived from human MOT14. AA range:131-180
Specificity	MCT14 Polyclonal Antibody detects endogenous levels of MCT14 protein.
Formulation	Liquid in PBS containing 50% glycerol, 0.5% BSA and 0.02% sodium azide.
Source	Polyclonal, Rabbit,IgG
Purification	The antibody was affinity-purified from rabbit antiserum by affinity-chromatography using epitope-specific immunogen.
Dilution	Western Blot: 1/500 - 1/2000. ELISA: 1/10000. Not yet tested in other applications.
Concentration	1 mg/ml
Purity	≥90%
Storage Stability	-20°C/1 year
Synonyms	SLC16A14; MCT14; Monocarboxylate transporter 14; MCT 14; Solute carrier family 16 member 14
Observed Band	48kD
Cell Pathway	Cell membrane ; Multi-pass membrane protein .
Tissue Specificity	Alzheimer cortex,Brain,Brain cortex,Lung,
Function	function:Proton-linked monocarboxylate transporter. Catalyzes the rapid transport across the plasma membrane of many monocarboxylates.,similarity:Belongs to the major facilitator superfamily. Monocarboxylate porter (TC 2.A.1.13) family.,
Background	function:Proton-linked monocarboxylate transporter. Catalyzes the rapid transport across the plasma membrane of many monocarboxylates.,similarity:Belongs to the major facilitator superfamily. Monocarboxylate porter (TC 2.A.1.13) family.,
matters needing attention	Avoid repeated freezing and thawing!
Usage suggestions	This product can be used in immunological reaction related experiments. For more information, please consult technical personnel.



Products Images



Western Blot analysis of HEPG2 cells using MCT14 Polyclonal Antibody diluted at 1:1000



Western blot analysis of lysates from HUVEC and HepG2 cells, using MOT14 Antibody. The lane on the right is blocked with the synthesized peptide.