

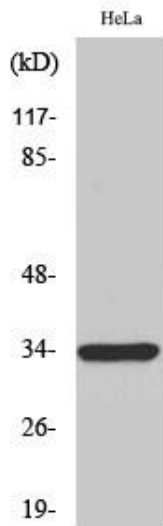


MRGE Polyclonal Antibody

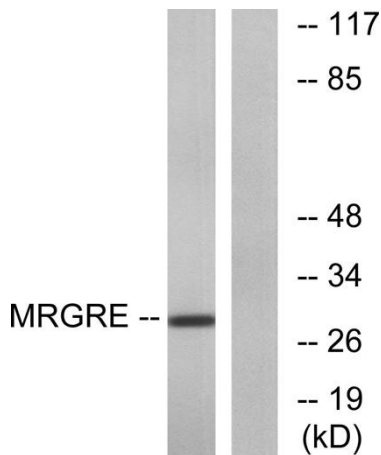
Catalog No	YP-Ab-13422
Isotype	IgG
Reactivity	Human;Mouse;Rat
Applications	WB;ELISA;IHC
Gene Name	MRGPRE
Protein Name	Mas-related G-protein coupled receptor member E
Immunogen	The antiserum was produced against synthesized peptide derived from human MRGRE. AA range:171-220
Specificity	MRGE Polyclonal Antibody detects endogenous levels of MRGE protein.
Formulation	Liquid in PBS containing 50% glycerol, 0.5% BSA and 0.02% sodium azide.
Source	Polyclonal, Rabbit,IgG
Purification	The antibody was affinity-purified from rabbit antiserum by affinity-chromatography using epitope-specific immunogen.
Dilution	WB 1:500-2000;IHC-p 1:50-300; ELISA 2000-20000
Concentration	1 mg/ml
Purity	≥90%
Storage Stability	-20°C/1 year
Synonyms	MRGPRE; GPR167; MRGE; Mas-related G-protein coupled receptor member E; G-protein coupled receptor 167
Observed Band	30kD
Cell Pathway	Cell membrane; Multi-pass membrane protein.
Tissue Specificity	
Function	function:Orphan receptor. May regulate nociceptor function and/or development, including the sensation or modulation of pain.,similarity:Belongs to the G-protein coupled receptor 1 family. Mas subfamily.,
Background	function:Orphan receptor. May regulate nociceptor function and/or development, including the sensation or modulation of pain.,similarity:Belongs to the G-protein coupled receptor 1 family. Mas subfamily.,
matters needing attention	Avoid repeated freezing and thawing!
Usage suggestions	This product can be used in immunological reaction related experiments. For more information, please consult technical personnel.



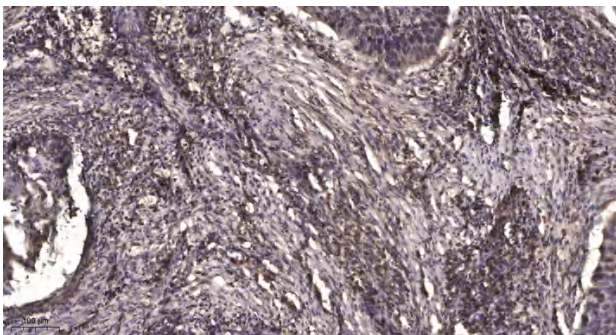
Products Images



Western Blot analysis of various cells using MRGE Polyclonal Antibody



Western blot analysis of lysates from HeLa cells, using MRGRE Antibody. The lane on the right is blocked with the synthesized peptide.



Immunohistochemical analysis of paraffin-embedded human Squamous cell carcinoma of lung. 1, Antibody was diluted at 1:200(4° overnight). 2, Tris-EDTA,pH9.0 was used for antigen retrieval. 3,Secondary antibody was diluted at 1:200(room temperature, 45min).