



Olfactory receptor 8D1 Polyclonal Antibody

Catalog No	YP-Ab-13630
Isotype	IgG
Reactivity	Human;Rat;Mouse;
Applications	WB;IF;ELISA
Gene Name	OR8D1
Protein Name	Olfactory receptor 8D1
Immunogen	The antiserum was produced against synthesized peptide derived from human OR8D1. AA range:234-283
Specificity	Olfactory receptor 8D1 Polyclonal Antibody detects endogenous levels of Olfactory receptor 8D1 protein.
Formulation	Liquid in PBS containing 50% glycerol, 0.5% BSA and 0.02% sodium azide.
Source	Polyclonal, Rabbit,IgG
Purification	The antibody was affinity-purified from rabbit antiserum by affinity-chromatography using epitope-specific immunogen.
Dilution	Western Blot: 1/500 - 1/2000. Immunofluorescence: 1/200 - 1/1000. ELISA: 1/20000. Not yet tested in other applications.
Concentration	1 mg/ml
Purity	≥90%
Storage Stability	-20°C/1 year
Synonyms	OR8D1; OR8D3; Olfactory receptor 8D1; OST004; Olfactory receptor 8D3; Olfactory receptor OR11-301; Olfactory receptor-like protein JCG9
Observed Band	34kD
Cell Pathway	Cell membrane; Multi-pass membrane protein.
Tissue Specificity	Expressed in the tongue.
Function	function:Odorant receptor (Potential). May be involved in taste perception.,similarity:Belongs to the G-protein coupled receptor 1 family.,tissue specificity:Expressed in the tongue.,
Background	olfactory receptor family 8 subfamily D member 1(OR8D1) Homo sapiens Olfactory receptors interact with odorant molecules in the nose, to initiate a neuronal response that triggers the perception of a smell. The olfactory receptor proteins are members of a large family of G-protein-coupled receptors (GPCR) arising from single coding-exon genes. Olfactory receptors share a 7-transmembrane domain structure with many neurotransmitter and hormone receptors and are responsible for the recognition and G protein-mediated transduction of odorant signals. The olfactory receptor gene family is the largest in the genome. The nomenclature assigned to the olfactory receptor genes and proteins for this organism is independent of other organisms. [provided by



RefSeq, Jul 2008],

matters needing attention

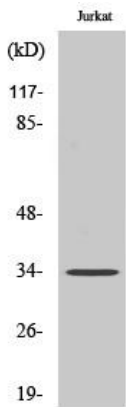
Avoid repeated freezing and thawing!

Usage suggestions

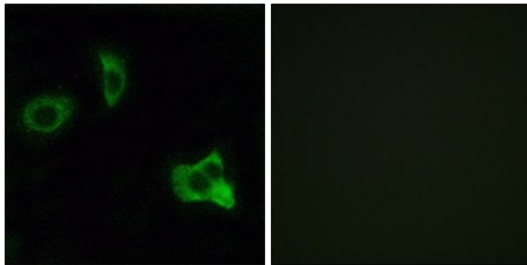
This product can be used in immunological reaction related experiments. For more information, please consult technical personnel.



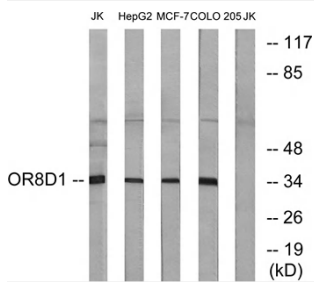
Products Images



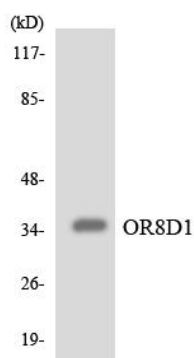
Western Blot analysis of various cells using Olfactory receptor 8D1 Polyclonal Antibody



Immunofluorescence analysis of MCF7 cells, using OR8D1 Antibody. The picture on the right is blocked with the synthesized peptide.



Western blot analysis of lysates from Jurkat, HepG2, MCF-7, and COLO cells, using OR8D1 Antibody. The lane on the right is blocked with the synthesized peptide.



Western blot analysis of the lysates from HUVEC cells using OR8D1 antibody.