



# TNF-R2 Polyclonal Antibody

<b>Catalog No</b>	YP-Ab-13709
<b>Isotype</b>	IgG
<b>Reactivity</b>	Human;Mouse;Rat
<b>Applications</b>	WB;IHC;IF;ELISA
<b>Gene Name</b>	TNFRSF1B
<b>Protein Name</b>	Tumor necrosis factor receptor superfamily member 1B
<b>Immunogen</b>	The antiserum was produced against synthesized peptide derived from human TNF Receptor II. AA range:376-425
<b>Specificity</b>	TNF-R2 Polyclonal Antibody detects endogenous levels of TNF-R2 protein.
<b>Formulation</b>	Liquid in PBS containing 50% glycerol, 0.5% BSA and 0.02% sodium azide.
<b>Source</b>	Polyclonal, Rabbit,IgG
<b>Purification</b>	The antibody was affinity-purified from rabbit antiserum by affinity-chromatography using epitope-specific immunogen.
<b>Dilution</b>	Western Blot: 1/500 - 1/2000. Immunohistochemistry: 1/100 - 1/300. Immunofluorescence: 1/200 - 1/1000. ELISA: 1/20000. Not yet tested in other applications.
<b>Concentration</b>	1 mg/ml
<b>Purity</b>	≥90%
<b>Storage Stability</b>	-20°C/1 year
<b>Synonyms</b>	TNFRSF1B; TNFBR; TNFR2; Tumor necrosis factor receptor superfamily member 1B; Tumor necrosis factor receptor 2; TNF-R2; Tumor necrosis factor receptor type II; TNF-RII; TNFR-II; p75; p80 TNF-alpha receptor; CD antigen CD120b; Etanercept
<b>Observed Band</b>	48kD
<b>Cell Pathway</b>	[Isoform 1]: Cell membrane; Single-pass type I membrane protein.; [Isoform 2]: Secreted.; [Tumor necrosis factor-binding protein 2]: Secreted.
<b>Tissue Specificity</b>	Muscle,PNS,Urine,
<b>Function</b>	function:Receptor with high affinity for TNFSF2/TNF-alpha and approximately 5-fold lower affinity for homotrimeric TNFSF1/lymphotoxin-alpha. The TRAF1/TRAF2 complex recruits the apoptotic suppressors BIRC2 and BIRC3 to TNFRSF1B/TNFR2. This receptor mediates most of the metabolic effects of TNF-alpha. Isoform 2 blocks TNF-alpha-induced apoptosis, which suggests that it regulates TNF-alpha function by antagonizing its biological activity.,online information:Clinical information on Enbrel,pharmaceutical:Available under the name Enbrel (Immunex and Wyeth-Ayerst). Used to treat moderate to severe rheumatoid arthritis (RA). Enbrel consist of the extracellular ligand-binding portion of TNFRSF1B linked to an immunoglobulin Fc chain. It binds to TNF-alpha and



blocks its interactions with receptors.,PTM:A soluble form (tumor necrosis factor binding protein 2) is produced from the membrane form by

**Background**

The protein encoded by this gene is a member of the TNF-receptor superfamily. This protein and TNF-receptor 1 form a heterocomplex that mediates the recruitment of two anti-apoptotic proteins, c-IAP1 and c-IAP2, which possess E3 ubiquitin ligase activity. The function of IAPs in TNF-receptor signalling is unknown, however, c-IAP1 is thought to potentiate TNF-induced apoptosis by the ubiquitination and degradation of TNF-receptor-associated factor 2, which mediates anti-apoptotic signals. Knockout studies in mice also suggest a role of this protein in protecting neurons from apoptosis by stimulating antioxidative pathways. [provided by RefSeq, Jul 2008],

**matters needing attention**

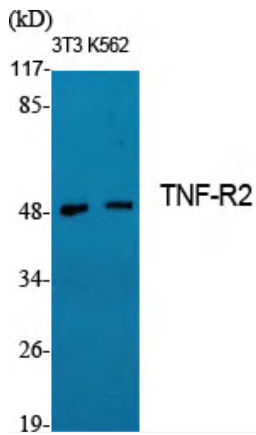
Avoid repeated freezing and thawing!

**Usage suggestions**

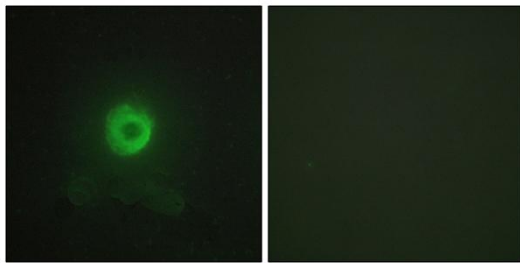
This product can be used in immunological reaction related experiments. For more information, please consult technical personnel.



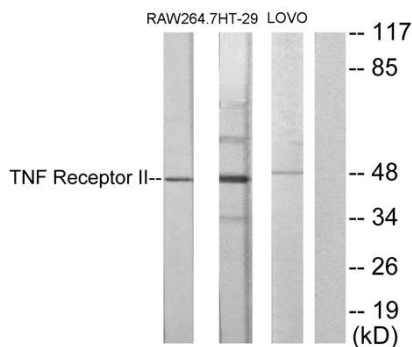
## Products Images



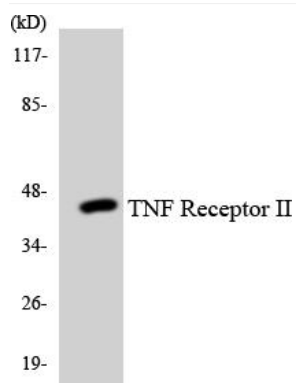
Western Blot analysis of various cells using TNF-R2 Polyclonal Antibody diluted at 1:1000. Secondary antibody(catalog#:RS0002) was diluted at 1:20000



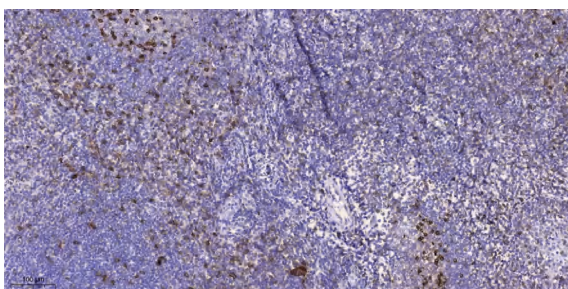
Immunofluorescence analysis of HeLa cells, using TNF Receptor II Antibody. The picture on the right is blocked with the synthesized peptide.



Western blot analysis of lysates from RAW264.7, HT-29, and LOVO cells, using TNF Receptor II Antibody. The lane on the right is blocked with the synthesized peptide.



Western blot analysis of the lysates from HUVEC cells using TNF Receptor II antibody.



Immunohistochemical analysis of paraffin-embedded human tonsil. 1, Antibody was diluted at 1:200(4° overnight). 2, Tris-EDTA,pH9.0 was used for antigen retrieval. 3,Secondary antibody was diluted at 1:200(room temperature, 45min).