



# CD28 (phospho Tyr218) Polyclonal Antibody

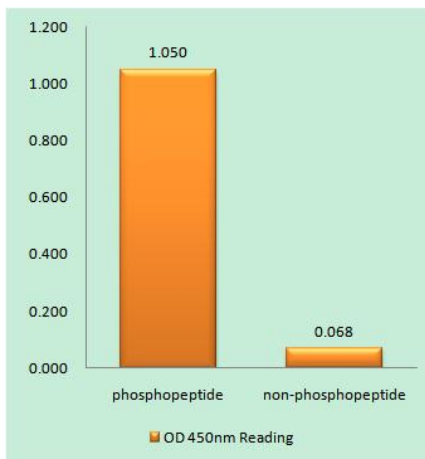
<b>Catalog No</b>	YP-Ab-13843
<b>Isotype</b>	IgG
<b>Reactivity</b>	Human
<b>Applications</b>	WB;ELISA
<b>Gene Name</b>	CD28
<b>Protein Name</b>	T-cell-specific surface glycoprotein CD28
<b>Immunogen</b>	The antiserum was produced against synthesized peptide derived from human CD28 around the phosphorylation site of Tyr218. AA range:171-220
<b>Specificity</b>	Phospho-CD28 (Y218) Polyclonal Antibody detects endogenous levels of CD28 protein only when phosphorylated at Y218.
<b>Formulation</b>	Liquid in PBS containing 50% glycerol, 0.5% BSA and 0.02% sodium azide.
<b>Source</b>	Polyclonal, Rabbit,IgG
<b>Purification</b>	The antibody was affinity-purified from rabbit antiserum by affinity-chromatography using epitope-specific immunogen.
<b>Dilution</b>	Western Blot: 1/500 - 1/2000. ELISA: 1/40000. Not yet tested in other applications.
<b>Concentration</b>	1 mg/ml
<b>Purity</b>	≥90%
<b>Storage Stability</b>	-20°C/1 year
<b>Synonyms</b>	CD28; T-cell-specific surface glycoprotein CD28; TP44; CD antigen CD28
<b>Observed Band</b>	45kD
<b>Cell Pathway</b>	Membrane; Single-pass type I membrane protein.; [Isoform 3]: Cell surface .
<b>Tissue Specificity</b>	Expressed in T-cells and plasma cells, but not in less mature B-cells.
<b>Function</b>	function:Involved in T-cell activation, the induction of cell proliferation and cytokine production and promotion of T-cell survival.,online information:CD28 entry,similarity:Contains 1 Ig-like V-type (immunoglobulin-like) domain.,subunit:Homodimer; disulfide-linked. Interacts with DUSP14. Binds to CD80/B7-1 and CD86/B7-2/B70.,tissue specificity:Expressed in T-cells and plasma cells, but not in less mature B-cells.,
<b>Background</b>	The protein encoded by this gene is essential for T-cell proliferation and survival, cytokine production, and T-helper type-2 development. Several alternatively spliced transcript variants encoding different isoforms have been found for this gene.[provided by RefSeq, Jul 2011],
<b>matters needing attention</b>	Avoid repeated freezing and thawing!



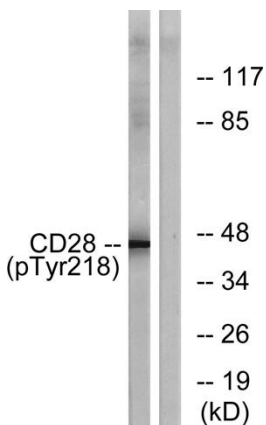
### Usage suggestions

This product can be used in immunological reaction related experiments. For more information, please consult technical personnel.

## Products Images



Enzyme-Linked Immunosorbent Assay (Phospho-ELISA) for Immunogen Phosphopeptide (Phospho-left) and Non-Phosphopeptide (Phospho-right), using CD28 (Phospho-Tyr218) Antibody



Western blot analysis of lysates from HepG2 cells treated with nocodazole 1ug/ml 16h, using CD28 (Phospho-Tyr218) Antibody. The lane on the right is blocked with the phospho peptide.