



C6 Polyclonal Antibody

Catalog No	YP-Ab-13876
Isotype	IgG
Reactivity	Human;Rat
Applications	WB;IHC;IF;ELISA
Gene Name	C6
Protein Name	Complement component C6
Immunogen	The antiserum was produced against synthesized peptide derived from human C6. AA range:221-270
Specificity	C6 Polyclonal Antibody detects endogenous levels of C6 protein.
Formulation	Liquid in PBS containing 50% glycerol, 0.5% BSA and 0.02% sodium azide.
Source	Polyclonal, Rabbit,IgG
Purification	The antibody was affinity-purified from rabbit antiserum by affinity-chromatography using epitope-specific immunogen.
Dilution	WB: 1/500 - 1/2000. IHC: 1/100 - 1/300. ELISA: 1/40000.. IF 1:50-200
Concentration	1 mg/ml
Purity	≥90%
Storage Stability	-20°C/1 year
Synonyms	C6; Complement component C6
Observed Band	85-105kD
Cell Pathway	Secreted.
Tissue Specificity	Blood,Ovary,Plasma,
Function	disease:Defects in C6 are the cause of complement component 6 deficiency (C6D) [MIM:612446].,function:Involved in the formation of the lytic c5b-9m complex.,online information:C6 mutation db,polymorphism:The sequence shown is that of allotype C6 B.,PTM:All cysteine residues are assumed to be cross-linked to one another. Individual modules containing an even number of conserved cysteine residues are supposed to have disulfide linkages only within the same module.,similarity:Belongs to the complement C6/C7/C8/C9 family.,similarity:Contains 1 EGF-like domain.,similarity:Contains 1 LDL-receptor class A domain.,similarity:Contains 1 MACPF domain.,similarity:Contains 2 Sushi (CCP/SCR) domains.,similarity:Contains 3 TSP type-1 domains.,
Background	This gene encodes a component of the complement cascade. The encoded protein is part of the membrane attack complex that can be incorporated into the cell membrane and cause cell lysis. Mutations in this gene are associated with complement component-6 deficiency. Transcript variants encoding the same



protein have been described.[provided by RefSeq, Nov 2012],

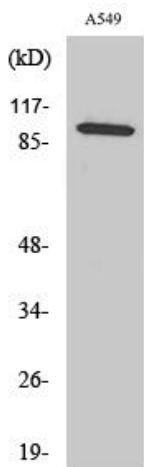
matters needing attention

Avoid repeated freezing and thawing!

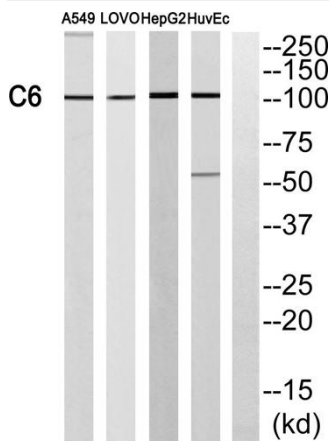
Usage suggestions

This product can be used in immunological reaction related experiments. For more information, please consult technical personnel.

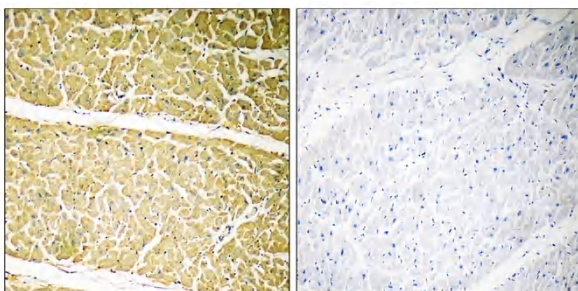
Products Images



Western Blot analysis of various cells using C6 Polyclonal Antibody diluted at 1:1000



Western blot analysis of C6 Antibody. The lane on the right is blocked with the C6 peptide.



Immunohistochemistry analysis of paraffin-embedded human heart, using C6 Antibody. The lane on the right is blocked with the C6 peptide.