



CD272 Polyclonal Antibody

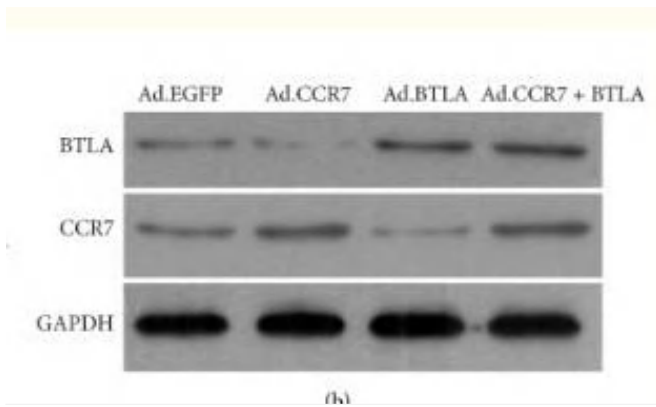
Catalog No	YP-Ab-13890
Isotype	IgG
Reactivity	Human;Rat;Mouse;
Applications	WB;IHC;IF;FCM;ELISA
Gene Name	BTLA
Protein Name	B- and T-lymphocyte attenuator
Immunogen	Synthetic peptide from human protein at AA range: 101-150
Specificity	CD272 Polyclonal Antibody detects endogenous levels of CD272 protein.
Formulation	Liquid in PBS containing 50% glycerol, 0.5% BSA and 0.02% sodium azide.
Source	Polyclonal, Rabbit,IgG
Purification	The antibody was affinity-purified from rabbit antiserum by affinity-chromatography using epitope-specific immunogen.
Dilution	WB: 1/500 - 1/2000. IHC: 1/200 - 1/1000. Flow cytometry: 1/200 - 1/400. ELISA: 1/10000.. IF 1:50-200
Concentration	1 mg/ml
Purity	≥90%
Storage Stability	-20°C/1 year
Synonyms	BTLA; B- and T-lymphocyte attenuator; B- and T-lymphocyte-associated protein; CD antigen CD272
Observed Band	36kD
Cell Pathway	Cell membrane ; Single-pass type I membrane protein .
Tissue Specificity	PCR rescued clones,Peripheral blood,Thymus,Trachea,
Function	function:Lymphocyte inhibitory receptor which inhibits lymphocytes during immune response.,PTM:N-glycosylated.,PTM:Phosphorylated on Tyr residues by TNFRSF14 and by antigen receptors cross-linking, both inducing association with PTPN6 and PTPN11.,similarity:Contains 1 Ig-like V-type (immunoglobulin-like) domain.,subunit:Interacts with tyrosine phosphatases PTPN6/SHP-1 and PTPN11/SHP-2. Interacts with TNFRSF14/HVEM.,
Background	This gene encodes a member of the immunoglobulin superfamily. The encoded protein contains a single immunoglobulin (Ig) domain and is a receptor that relays inhibitory signals to suppress the immune response. Alternative splicing results in multiple transcript variants. Polymorphisms in this gene have been associated with an increased risk of rheumatoid arthritis. [provided by RefSeq, Aug 2011],
matters needing attention	Avoid repeated freezing and thawing!



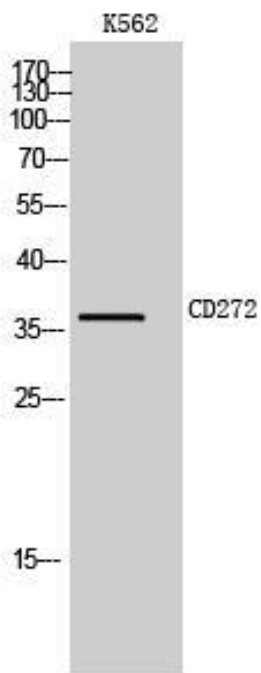
Usage suggestions

This product can be used in immunological reaction related experiments. For more information, please consult technical personnel.

Products Images



Xin, Haiming, et al. "Adenovirus-mediated CCR7 and BTLA overexpression enhances immune tolerance and migration in immature dendritic cells." *BioMed research international* 2017 (2017).



Western Blot analysis of K562 cells using CD272 Polyclonal Antibody