



CD3- δ Polyclonal Antibody

Catalog No	YP-Ab-13900
Isotype	IgG
Reactivity	Human;Rat;Mouse;
Applications	WB;ELISA
Gene Name	CD3D
Protein Name	T-cell surface glycoprotein CD3 delta chain
Immunogen	The antiserum was produced against synthesized peptide derived from human N-terminal CD3-delta. AA range:7-56
Specificity	CD3- δ Polyclonal Antibody detects endogenous levels of CD3- δ protein.
Formulation	Liquid in PBS containing 50% glycerol, 0.5% BSA and 0.02% sodium azide.
Source	Polyclonal, Rabbit,IgG
Purification	The antibody was affinity-purified from rabbit antiserum by affinity-chromatography using epitope-specific immunogen.
Dilution	Western Blot: 1/500 - 1/2000. ELISA: 1/20000. Not yet tested in other applications.
Concentration	1 mg/ml
Purity	$\geq 90\%$
Storage Stability	-20°C/1 year
Synonyms	CD3D; T3D; T-cell surface glycoprotein CD3 delta chain; T-cell receptor T3 delta chain; CD antigen CD3d
Observed Band	20kD
Cell Pathway	Cell membrane; Single-pass type I membrane protein.
Tissue Specificity	CD3D is mostly present on T-lymphocytes with its TCR-CD3 partners. Present also in fetal NK-cells.
Function	caution:The sequence shown here is derived from an Ensembl automatic analysis pipeline and should be considered as preliminary data.,disease:Defects in CD3D are a cause of severe combined immunodeficiency autosomal recessive T-cell-negative/B-cell-positive/NK-cell-positive (SCIDBNK) [MIM:608971]. SCID refers to a genetically and clinically heterogeneous group of rare congenital disorders characterized by impairment of both humoral and cell-mediated immunity, leukopenia, and low or absent antibody levels. Patients with SCID present in infancy with recurrent, persistent infections by opportunistic organisms. The common characteristic of all types of SCID is absence of T-cell-mediated cellular immunity due to a defect in T-cell development.,function:The CD3 complex mediates signal transduction.,online information:CD3D mutation db,similarity:Contains 1 ITAM domain.,subunit:The TCR/CD3 comple

**Background**

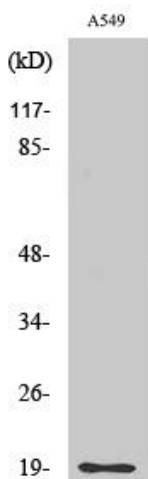
The protein encoded by this gene is part of the T-cell receptor/CD3 complex (TCR/CD3 complex) and is involved in T-cell development and signal transduction. The encoded membrane protein represents the delta subunit of the CD3 complex, and along with four other CD3 subunits, binds either TCR alpha/beta or TCR gamma/delta to form the TCR/CD3 complex on the surface of T-cells. Defects in this gene are a cause of severe combined immunodeficiency autosomal recessive T-cell-negative/B-cell-positive/NK-cell-positive (SCIDBNK). Two transcript variants encoding different isoforms have been found for this gene. Other variants may also exist, but the full-length nature of their transcripts has yet to be defined. [provided by RefSeq, Feb 2009],

matters needing attention

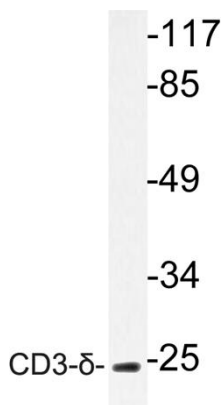
Avoid repeated freezing and thawing!

Usage suggestions

This product can be used in immunological reaction related experiments. For more information, please consult technical personnel.

Products Images

Western Blot analysis of various cells using CD3- δ Polyclonal Antibody



Western blot analysis of lysate from A549 cells, using CD3- δ antibody.