



# NET-5 Polyclonal Antibody

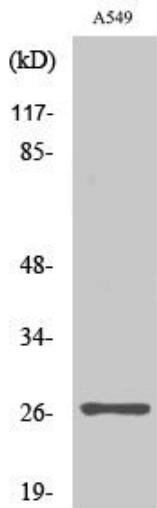
<b>Catalog No</b>	YP-Ab-13949
<b>Isotype</b>	IgG
<b>Reactivity</b>	Human;Mouse
<b>Applications</b>	WB;ELISA
<b>Gene Name</b>	TSPAN9
<b>Protein Name</b>	Tetraspanin-9
<b>Immunogen</b>	The antiserum was produced against synthesized peptide derived from human NET-5. AA range:72-121
<b>Specificity</b>	NET-5 Polyclonal Antibody detects endogenous levels of NET-5 protein.
<b>Formulation</b>	Liquid in PBS containing 50% glycerol, 0.5% BSA and 0.02% sodium azide.
<b>Source</b>	Polyclonal, Rabbit,IgG
<b>Purification</b>	The antibody was affinity-purified from rabbit antiserum by affinity-chromatography using epitope-specific immunogen.
<b>Dilution</b>	Western Blot: 1/500 - 1/2000. ELISA: 1/10000. Not yet tested in other applications.
<b>Concentration</b>	1 mg/ml
<b>Purity</b>	≥90%
<b>Storage Stability</b>	-20°C/1 year
<b>Synonyms</b>	TSPAN9; NET5; Tetraspanin-9; Tspan-9; Tetraspan NET-5
<b>Observed Band</b>	27kD
<b>Cell Pathway</b>	Membrane ; Multi-pass membrane protein . Colocalizes with GP6 in tetraspanin microdomains on the platelet surface. .
<b>Tissue Specificity</b>	Expressed in megakaryocytes and platelets (at protein level).
<b>Function</b>	PTM:Glycosylated.,similarity:Belongs to the tetraspanin (TM4SF) family.,subcellular location:Colocalizes with GP6 in tetraspanin microdomains on the platelet surface.,subunit:Found in a complex with GP6.,tissue specificity:Expressed in megakaryocytes and platelets (at protein level).,
<b>Background</b>	The protein encoded by this gene is a member of the transmembrane 4 superfamily, also known as the tetraspanin family. Most of these members are cell-surface proteins that are characterized by the presence of four hydrophobic domains. The proteins mediate signal transduction events that play a role in the regulation of cell development, activation, growth and motility. Alternatively spliced transcripts encoding the same protein have been identified. [provided by RefSeq, Nov 2009],
<b>matters needing attention</b>	Avoid repeated freezing and thawing!



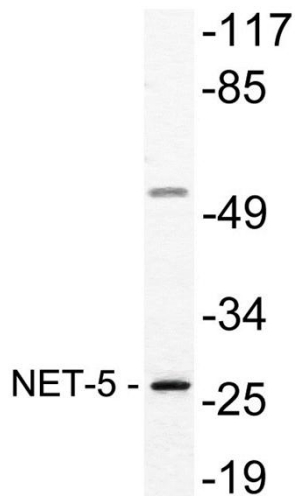
**Usage suggestions**

This product can be used in immunological reaction related experiments. For more information, please consult technical personnel.

**Products Images**



Western Blot analysis of various cells using NET-5 Polyclonal Antibody diluted at 1:2000



Western blot analysis of lysate from A549 cells, using NET-5 antibody.