



# TM4SF1 Polyclonal Antibody

<b>Catalog No</b>	YP-Ab-13968
<b>Isotype</b>	IgG
<b>Reactivity</b>	Human;Mouse
<b>Applications</b>	IHC;IF;ELISA
<b>Gene Name</b>	TM4SF1
<b>Protein Name</b>	Transmembrane 4 L6 family member 1
<b>Immunogen</b>	The antiserum was produced against synthesized peptide derived from human T4S1. AA range:1-50
<b>Specificity</b>	TM4SF1 Polyclonal Antibody detects endogenous levels of TM4SF1 protein.
<b>Formulation</b>	Liquid in PBS containing 50% glycerol, 0.5% BSA and 0.02% sodium azide.
<b>Source</b>	Polyclonal, Rabbit,IgG
<b>Purification</b>	The antibody was affinity-purified from rabbit antiserum by affinity-chromatography using epitope-specific immunogen.
<b>Dilution</b>	IHC: 1/100 - 1/300. ELISA: 1/20000.. IF 1:50-200
<b>Concentration</b>	1 mg/ml
<b>Purity</b>	≥90%
<b>Storage Stability</b>	-20°C/1 year
<b>Synonyms</b>	TM4SF1; M3S1; TAAL6; Transmembrane 4 L6 family member 1; Membrane component chromosome 3 surface marker 1; Tumor-associated antigen L6
<b>Observed Band</b>	
<b>Cell Pathway</b>	Membrane; Multi-pass membrane protein. Colocalizes with SDCBP2 in the apical region of the cell (PubMed:11102519).
<b>Tissue Specificity</b>	Highly expressed in lung, breast, colon and ovarian carcinomas. It is also present on some normal cells, endothelial cells in particular.
<b>Function</b>	similarity:Belongs to the L6 tetraspanin family.,subunit:Present in high molecular weight complexes in tumor cells.,tissue specificity:Highly expressed on lung, breast, colon, and ovarian carcinomas. It is also present on some normal cells, endothelial cells in particular.,
<b>Background</b>	The protein encoded by this gene is a member of the transmembrane 4 superfamily, also known as the tetraspanin family. Most of these members are cell-surface proteins that are characterized by the presence of four hydrophobic domains. The proteins mediate signal transduction events that play a role in the regulation of cell development, activation, growth and motility. This encoded protein is a cell surface antigen and is highly expressed in different carcinomas. [provided by RefSeq, Jul 2008],



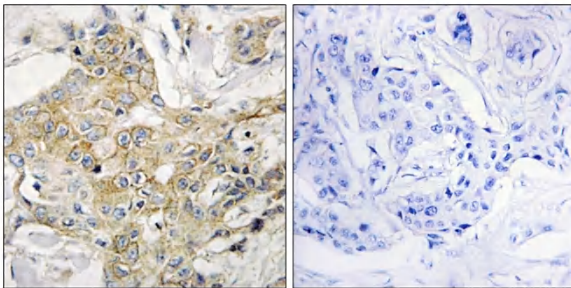
**matters needing attention**

Avoid repeated freezing and thawing!

**Usage suggestions**

This product can be used in immunological reaction related experiments. For more information, please consult technical personnel.

**Products Images**



Immunohistochemistry analysis of paraffin-embedded human breast carcinoma tissue, using T4S1 Antibody. The picture on the right is blocked with the synthesized peptide.