

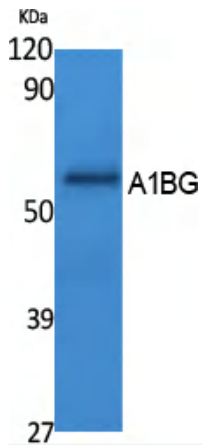


# A1BG Polyclonal Antibody

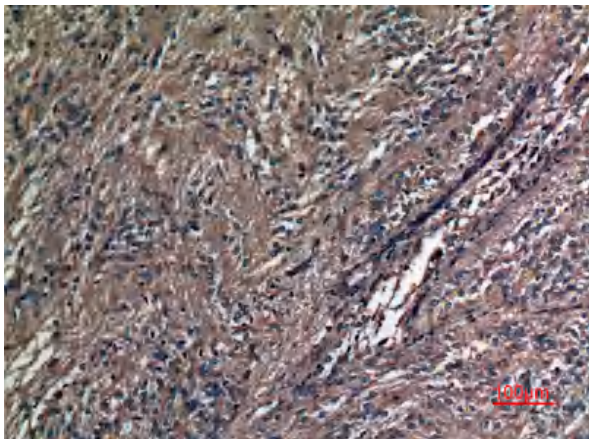
<b>Catalog No</b>	YP-Ab-13971
<b>Isotype</b>	IgG
<b>Reactivity</b>	Human;Rat;Mouse;
<b>Applications</b>	WB;IHC;IF;ELISA
<b>Gene Name</b>	A1BG
<b>Protein Name</b>	Alpha-1B-glycoprotein
<b>Immunogen</b>	Synthesized peptide derived from A1BG . at AA range: 100-180
<b>Specificity</b>	A1BG Polyclonal Antibody detects endogenous levels of A1BG protein.
<b>Formulation</b>	Liquid in PBS containing 50% glycerol, 0.5% BSA and 0.02% sodium azide.
<b>Source</b>	Polyclonal, Rabbit,IgG
<b>Purification</b>	The antibody was affinity-purified from rabbit antiserum by affinity-chromatography using epitope-specific immunogen.
<b>Dilution</b>	WB: 1/500 - 1/2000. IHC-p: 1:100-300 ELISA: 1/40000.. IF 1:50-200
<b>Concentration</b>	1 mg/ml
<b>Purity</b>	≥90%
<b>Storage Stability</b>	-20°C/1 year
<b>Synonyms</b>	A1BG; Alpha-1B-glycoprotein; Alpha-1-B glycoprotein
<b>Observed Band</b>	28kD
<b>Cell Pathway</b>	Secreted.
<b>Tissue Specificity</b>	Plasma.
<b>Function</b>	online information:The Singapore human mutation and polymorphism database,similarity:Contains 5 Ig-like V-type (immunoglobulin-like) domains.,tissue specificity:Plasma.,
<b>Background</b>	The protein encoded by this gene is a plasma glycoprotein of unknown function. The protein shows sequence similarity to the variable regions of some immunoglobulin supergene family member proteins. [provided by RefSeq, Jul 2008],
<b>matters needing attention</b>	Avoid repeated freezing and thawing!
<b>Usage suggestions</b>	This product can be used in immunological reaction related experiments. For more information, please consult technical personnel.



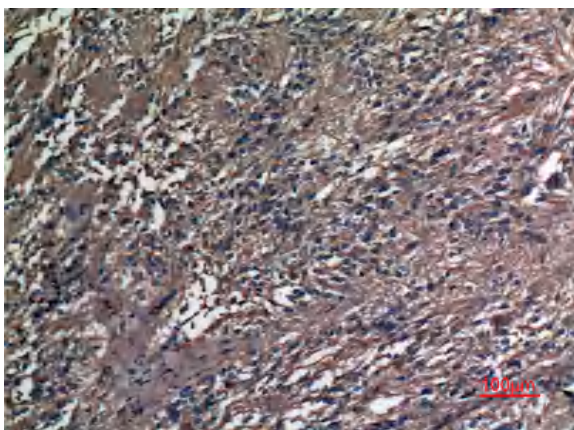
## Products Images



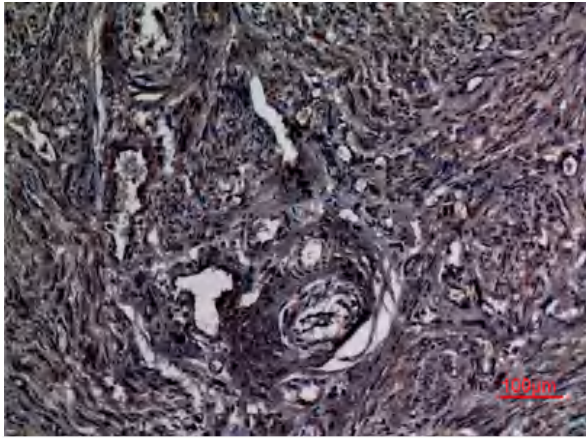
Western Blot analysis of extracts from K562 cells, using A1BG Polyclonal Antibody. Secondary antibody(catalog#:RS0002) was diluted at 1:20000



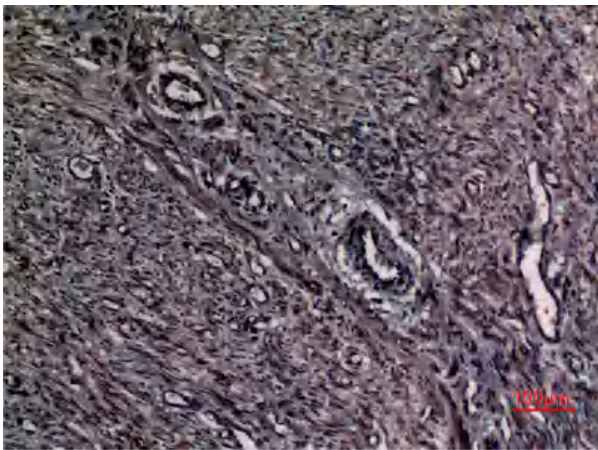
Immunohistochemical analysis of paraffin-embedded human-ovary, antibody was diluted at 1:100



Immunohistochemical analysis of paraffin-embedded human-ovary, antibody was diluted at 1:100



Immunohistochemical analysis of paraffin-embedded human-uterus, antibody was diluted at 1:100



Immunohistochemical analysis of paraffin-embedded human-uterus, antibody was diluted at 1:100