



# Hepassocin Polyclonal Antibody

<b>Catalog No</b>	YP-Ab-13974
<b>Isotype</b>	IgG
<b>Reactivity</b>	Human;Mouse;Rat
<b>Applications</b>	WB;IHC;IF;ELISA
<b>Gene Name</b>	FGL1
<b>Protein Name</b>	Fibrinogen-like protein 1
<b>Immunogen</b>	Synthesized peptide derived from the Internal region of human Hepassocin.
<b>Specificity</b>	Hepassocin Polyclonal Antibody detects endogenous levels of Hepassocin protein.
<b>Formulation</b>	Liquid in PBS containing 50% glycerol, 0.5% BSA and 0.02% sodium azide.
<b>Source</b>	Polyclonal, Rabbit,IgG
<b>Purification</b>	The antibody was affinity-purified from rabbit antiserum by affinity-chromatography using epitope-specific immunogen.
<b>Dilution</b>	WB: 1/500 - 1/2000. IHC-p: 1:100-300 ELISA: 1/20000.. IF 1:50-200
<b>Concentration</b>	1 mg/ml
<b>Purity</b>	≥90%
<b>Storage Stability</b>	-20°C/1 year
<b>Synonyms</b>	FGL1; HFREP1; Fibrinogen-like protein 1; HP-041; Hepassocin; Hepatocyte-derived fibrinogen-related protein 1; HFREP-1; Liver fibrinogen-related protein 1; LFIRE-1
<b>Observed Band</b>	36kD
<b>Cell Pathway</b>	Secreted . Secreted in the blood plasma. .
<b>Tissue Specificity</b>	Under normal conditions, liver-specific.
<b>Function</b>	function:Has hepatocyte mitogenic activity.,similarity:Contains 1 fibrinogen C-terminal domain.,subunit:Homodimer.,tissue specificity:Liver specific.,
<b>Background</b>	fibrinogen like 1(FGL1) Homo sapiens Fibrinogen-like 1 is a member of the fibrinogen family. This protein is homologous to the carboxy terminus of the fibrinogen beta- and gamma- subunits which contains the four conserved cysteines of fibrinogens and fibrinogen related proteins. However, this protein lacks the platelet-binding site, cross-linking region and a thrombin-sensitive site which are necessary for fibrin clot formation. This protein may play a role in the development of hepatocellular carcinomas. Four alternatively spliced transcript variants encoding the same protein exist for this gene. [provided by RefSeq, Jul 2008],



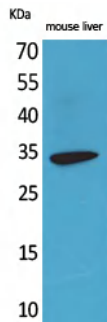
**matters needing attention**

Avoid repeated freezing and thawing!

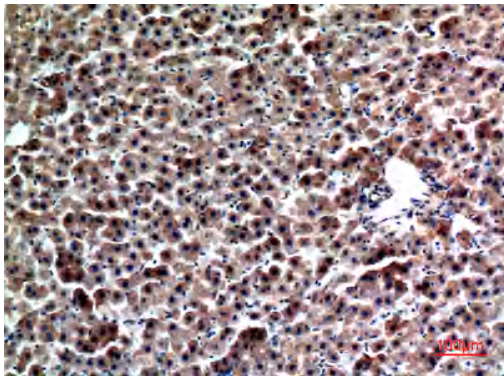
**Usage suggestions**

This product can be used in immunological reaction related experiments. For more information, please consult technical personnel.

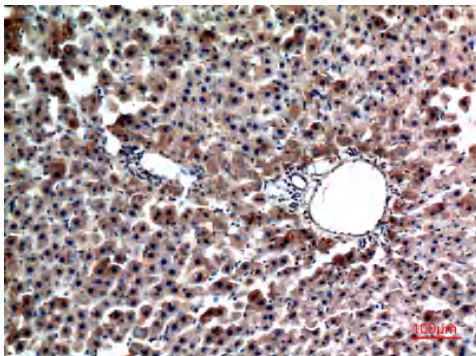
**Products Images**



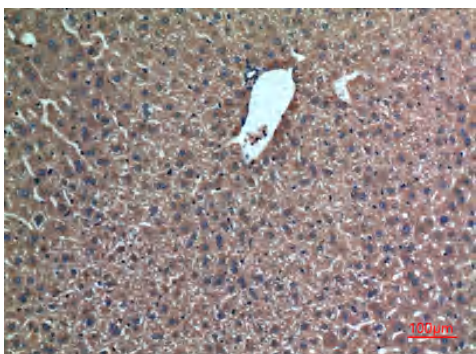
Western Blot analysis of mouse liver cells using Hepassocin Polyclonal Antibody. Secondary antibody(catalog#:RS0002) was diluted at 1:20000



Immunohistochemical analysis of paraffin-embedded rat-liver, antibody was diluted at 1:100



Immunohistochemical analysis of paraffin-embedded rat-liver, antibody was diluted at 1:100



Immunohistochemical analysis of paraffin-embedded mouse-liver, antibody was diluted at 1:100